

# Tips for Pieced Kimberbell Projects

By Kimberbell Designs

Additional information to help you get the best results from your Kimberbell Embroidery Designs that have “pieced” features, such as the Machine Embroider By Number™ or Zipper Pouch Projects. If you are using any Kimberbell project that contains “pieced” portions of fabric done with an embroidery machine, you will benefit from reading through this document first.

Included in this Document:

- **Easy as 1, 2, 3! (Taking it one step at a time!)**
- **File Transfer**
- **Placement of the First Piece**
- **Extended Stitch/Seam Lines**
- **How Can I Use My “Machine Embroider by Number” Projects?**

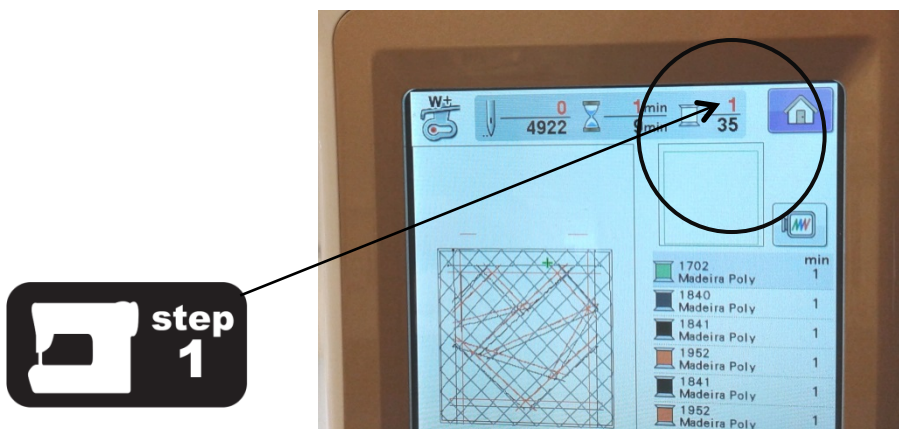
## Easy as 1, 2, 3!

Remember those *paint by number* coloring pictures you may have done as a child? All you had to do was follow the directions, coloring or painting each shape a specific color, and before you knew it, you created a fun mystery picture!

The piecing projects you’ll find in such projects like the “Machine Embroider by Number™” or zipper pouches, works the same way, but with fabric piecing on the embroidery machine—and we promise it’s still just as easy!

Don’t be overwhelmed by the number of steps in each design. They are each small steps that are easy to follow along when you read the directions. And although there are a number of color changes in the design, that is only meant to “tell the machine to stop” between steps. Usually only 1 or 2 thread changes are needed.

If you lose track of which step you are on, your step by step directions include an icon indicating which step from the embroidery design corresponds with that specific step in the directions.



The embroidery machine displays which step the design is on. This is what you can match up with the instructions to ensure you are always on the right step!

**Note:** If your set of directions for any zipper pouch or “machine embroider by number” projects did not include these icons, simply send us an email and we’d be happy to send you an updated file! Some earlier versions may not have included the extra icon.

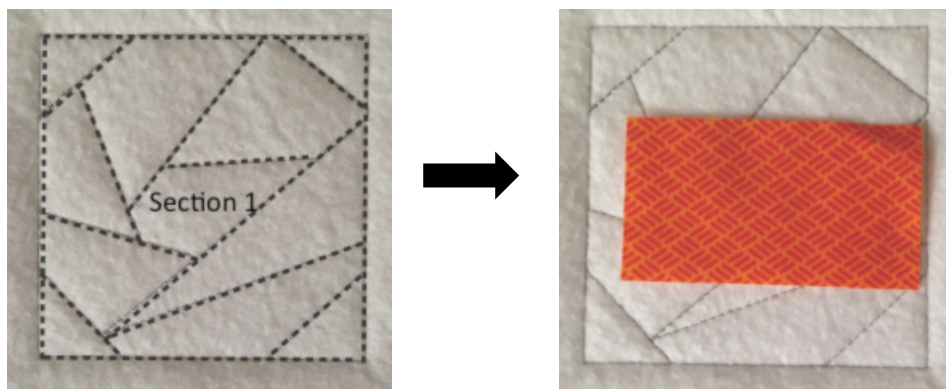
## File Transfer

Always transfer files directly from your CD, to your computer and/or USB thumb drive. If your CD in the computer can transfer directly to the machine, that works as well. We advise not opening it in your software program, as some software will combine colors. In these “pieced projects”, you do not want the colors to combine since there is a specific stitch order that has to be followed. Combining colors will alter the Kimberbell embroidery file, making it read incorrectly in the machine.

## Placement of the First Piece

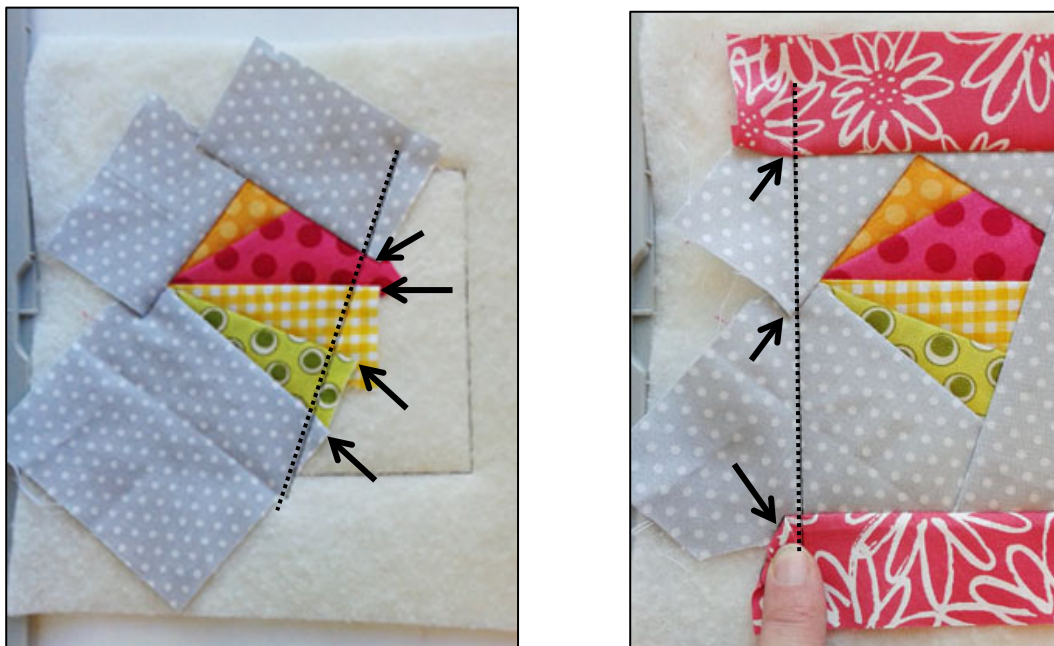
When placing your first piece of fabric on the stitched out template, make sure the fabric piece is not only fully covering the corresponding number space, but that it is **centered** over it. The initial piecing of that shape will be slightly larger than the lines on the template. **This first piece of fabric should be facing up.** All other fabric pieces that follow will be placed with the fabric facing down, and with right sides together.

**Example from, Machine Embroider by Number: {Snowman}**



## Extended Stitch/Seam Lines

As you follow the instructions, piecing each piece on your “*pieced project*”, you may find an extended seam line that makes it difficult to trim the excess fabric. The reason for the extended lines is so that your fabric doesn’t flip up when the machine is going across seams in later steps. (We promise you’ll be grateful for those minor extensions of lines!) ☺ Here are two examples of extended seam lines that go beyond the stitch lines (**marked by black arrows**):



The good news is that the extended line will be hidden in the seam. If you are concerned that they will show through a light fabric, or would like to reduce the minor bulk, there are a couple of options:

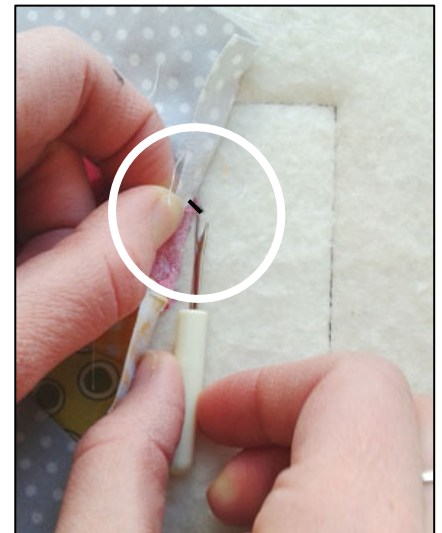
- **Option 1:** You can simply pop those few extra stitches with a seam ripper. This will not alter the design because the seam has already been secured with the previous stitch. There are usually just 1-3 stitches that would be “popped.”



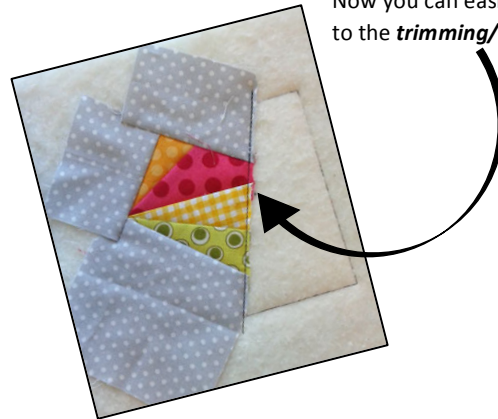
Lift excess fabric that is beyond the stitch line.



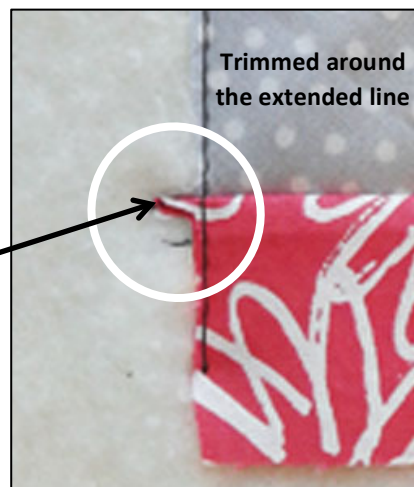
Find the extended lines that go into the seam.



“Pop” a few stitches with your seam ripper. Now you can easily trim the fabric right next to the *trimming/placement line*.



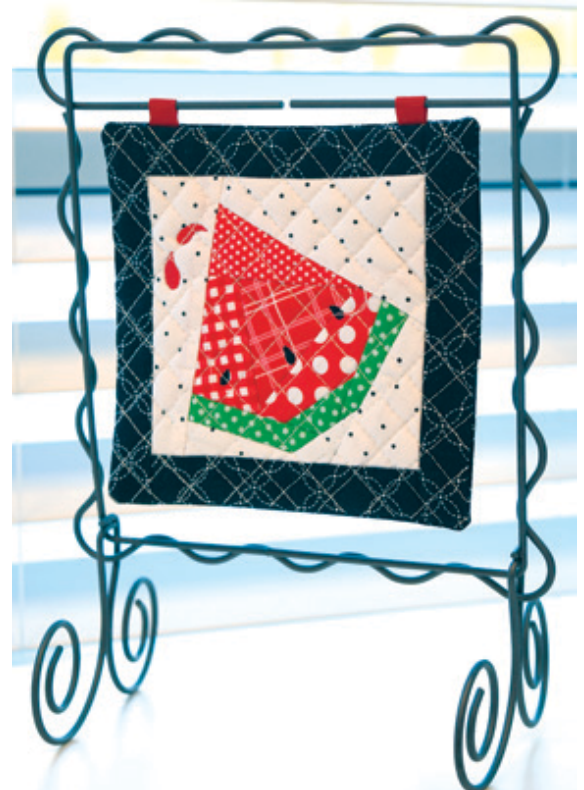
- **Option 2:** You can just trim around them with scissors. Again, because it will be hidden in the seam, it’s not going to be seen – unless you are using a very light fabric.



## How Can I Use My *Machine Embroider By Number™* Projects?

Kimberbell's Machine Embroider By Number™ series are fast and easy projects that can be used in many ways! Here are a few ideas:

- Pincushions
- Ornaments
- Mug Rugs
- Mini Quilts
- Hot Pads
- Mini Shelf Pillows
- Quilt Blocks
- Interchangeable Calendar Toppers
- Framed Décor
- Clothesline Banner
- Attach to a Mini Quilt Dowel Hanger
- Hang onto a Table Top Quilt Stand (The medium sizes fit a 6 x 6" opening of a stand.)
- Fill With Rice for Hot or Cold Packs
- And much, much more!



*We'd love to see what you did with your projects! Tag us on Instagram or Facebook with the hashtags #kimberbelldesigns and #kimberbellmetime*