

Anita Goodesign

Home Decor Tutorials, Tips and Ideas



www.anita-goodesign.com

Switch Plate Covers

Decorating light switch covers is a great way to light up any room. You may have done this in the past with wallpaper, why not try it with embroidery? There are a few things you need to be concerned with before starting this project.

- 1. Electricity is not a hobby. Have someone that knows about electricity or a licensed electrician help you remove and install the switch plate covers.**
- 2. Make sure you use thin material when embroidering the design. Thick material will not fit in the switch plate cover.**
- 3. Use only switch plate covers that are designed for this application. They are available at most hardware stores. Failure to use the proper switch plate cover can result in damage to the switch or possible fire. The switch plate covers included in every pack are specially designed for this application and they make sure no part of the fabric or paper comes in contact with any of the electrical components.**

STEP 1



STEP 2



STEP 3



STEP 4



STEP 5



Step 1 shows the materials you will need: scissors, regular tape, double sided tape, a switch cover, a screwdriver, and the embroidered sew out. Carefully remove the existing switch plate cover as illustrated in step 2. Trim the stabilizer away from the embroidery by cutting right on the guidelines. Step 4 shows the stabilizer completely trimmed away. Next trim away the center of the design using the same technique, being careful to cut only the stabilizer not the fabric.

STEP 6



STEP 7



STEP 8



STEP 9



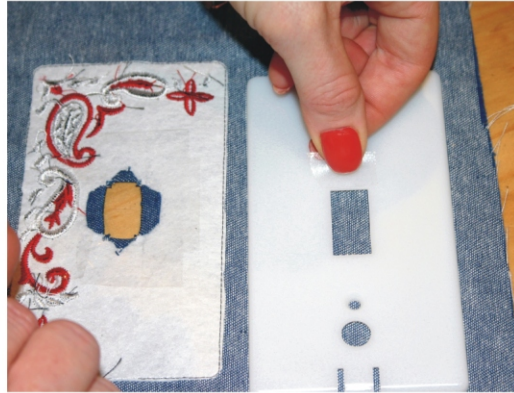
Step 6 shows the removal of any strands of thread left by the guide stitch. In step 7 we are going to carefully cut a slit down the center of the opening. Step 8 shows us notching each corner to create fold over flaps. Step 9 illustrates the first flap being flipped over. As you flip over each piece of material, tape it down with scotch tape. Repeat this for all four flaps creating a clean opening.

Switch Plate Covers

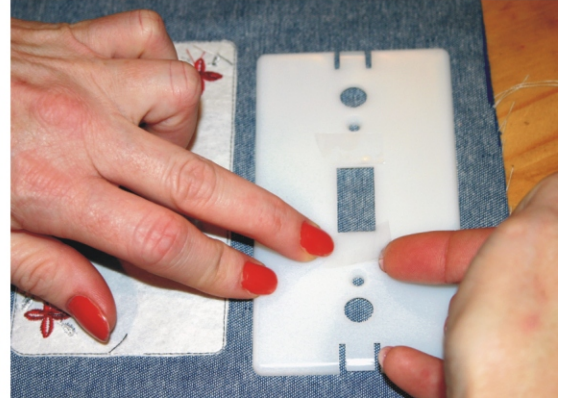
STEP 10



STEP 11

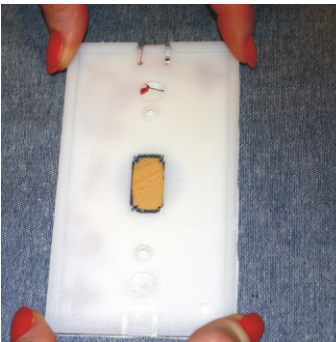


STEP 12



Step 10 shows all four sides of the opening taped into place. Take the back portion of the switch plate cover as shown in figure 11 and apply two sided tape right above the opening for the switch. This tape will secure the embroidered fabric in place. Repeat the same steps for the bottom of the cover as illustrated in step 12.

STEP 13



STEP 14



STEP 15



STEP 16



Step 13 shows us positioning the cover directly on top of the embroidered fabric, simply line up both rectangles. Make sure the embroidered swatch is facing down and press together. In step 14 we will take the clear plastic cover hold it underneath the fabric and pinch the two elements together

Switch Plate Covers

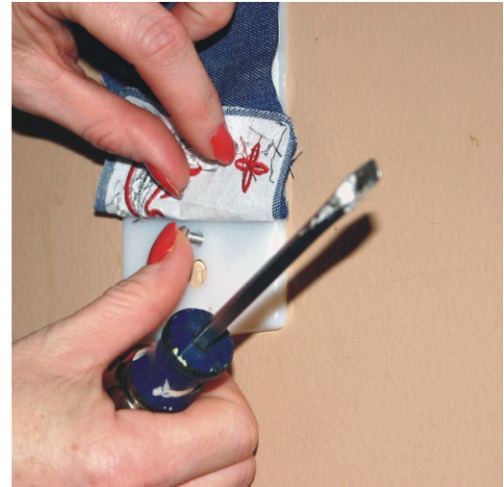
STEP 17



STEP 18



STEP 19



Before installing the cover on the wall take the cover apart. Fold back the top portion of the cover as illustrated in step 17. Carefully place the plastic guard over the existing switch, and screw it to the existing switch using the two screws that came with the cover. If you are unsure about how to do this hire a licensed electrician to do it. Step 19 shows us repeating the same thing on the lower screw.

STEP 20



STEP 21



We are almost done. After the screws are installed take the plastic cover and press it onto the cover base. It should snap onto the white plastic base. Be careful not to push too hard. Step 21 shows the finished product, now you are ready to decorate every switch in the house.

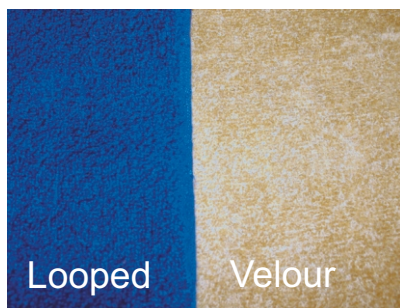
Towel Tips

Trims



There are two types of towels available for you to embellish. The first is a standard banded towel shown upper left and the second is a trimmed decorative towel. Buying a towel with existing trim is more luxurious right away and requires less decorative work. Unfortunately, there aren't that many different trimmed towels to choose from. We will show you later in this tutorial how to create your own trim.

Texture



Towels come in many different finishes, the two most popular being looped terry and velour terry. If you have to choose between the two always choose the velour terry style. Velour terry is flat and easier to embroider than looped terry. If you choose looped terry try to find a towel with small loops, fine design detail can get lost in long loops.

Sizes

Towels come in five sizes: bath sheet, bath towel, hand towel, finger tip towel, and wash cloth. The three most popular sizes for embroidery are the bath, hand, and fingertip. Bath sheets are too big to fold and display on a towel rack, and wash cloths are often too small. Try to find a towel brand that offers these different sizes. Below is shown the three sizes and the recommended design size for each.



Bath:
6x10 designs or larger work the best for large towels. If you don't have a large enough hoop try multiple hoopings.



Hand:
5x7 designs work well for hand towels.



Fingertip:
4x4 designs work well for fingertip towels.

Towel Tips

After selecting the proper design, placement on the towel is critical. Now, you can technically place the design any place you want, but here are some guidelines on how we do it and how most decorators do it. The bottom of the design should be between 1.5" and 2" from the towel band or trim line of the towel. If you are adding your own trim it is easier to embroider the towel first. Here is a step by step guide on proper design placement for a bath towel.

STEP 1



STEP 2



STEP 3



The first three steps involve finding the center of the towel. Steps one and two show us folding the towel in half lengthwise to find the center. After the towel is folded, step three shows us marking the center line with chalk.

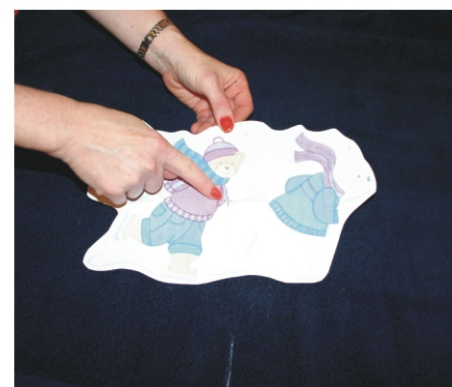
STEP 4



STEP 5



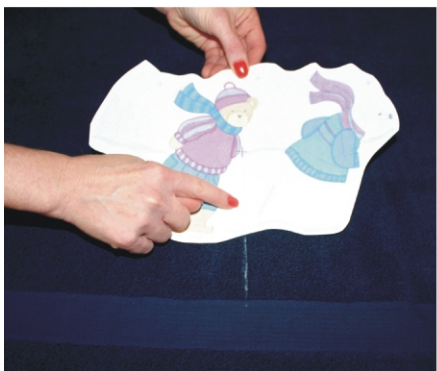
STEP 6



Open the towel up for step four and elongate the chalk line for easier visibility. Print out your design onto a piece of paper and trim around the design to get a better idea of what it will look like placed on the towel. Most embroidery software shows a center point on the design, illustrated in step six, this is very important for placement. If the center point is hard to see, make it darker with a marker or pen.

Towel Tips

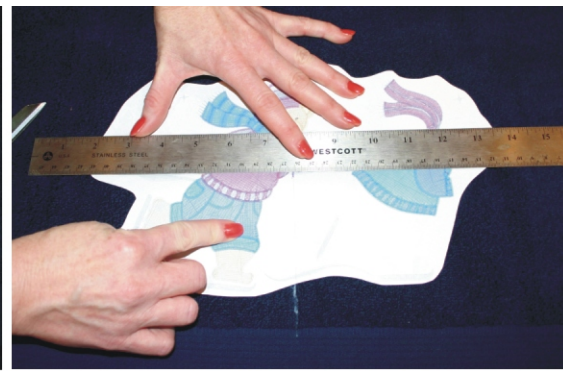
STEP 7



STEP 8



STEP 9



Step seven show us placing the printout of the design on the towel for placement and step eight shows us lining up the center line on the printout with the chalk line. After we find the proper placement we hold the printout in place with one hand and hold a ruler down across the horizontal center line of the design.

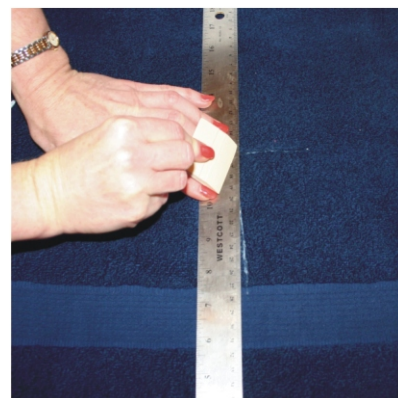
STEP 10



STEP 11



STEP 12

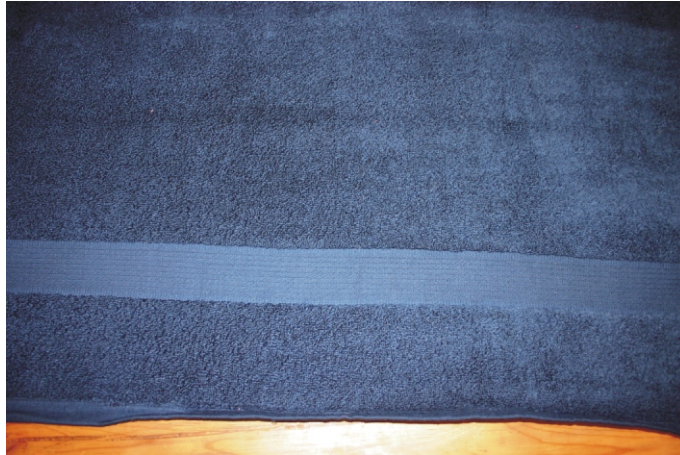


After the ruler is in place fold the printout over the ruler and draw your horizontal line. This line will cross over your vertical center line giving you the spot to line up the presser foot of your embroidery machine. The final step before hooping is to darken the chalk lines for easier visibility. Your towel is now marked for perfect placement.

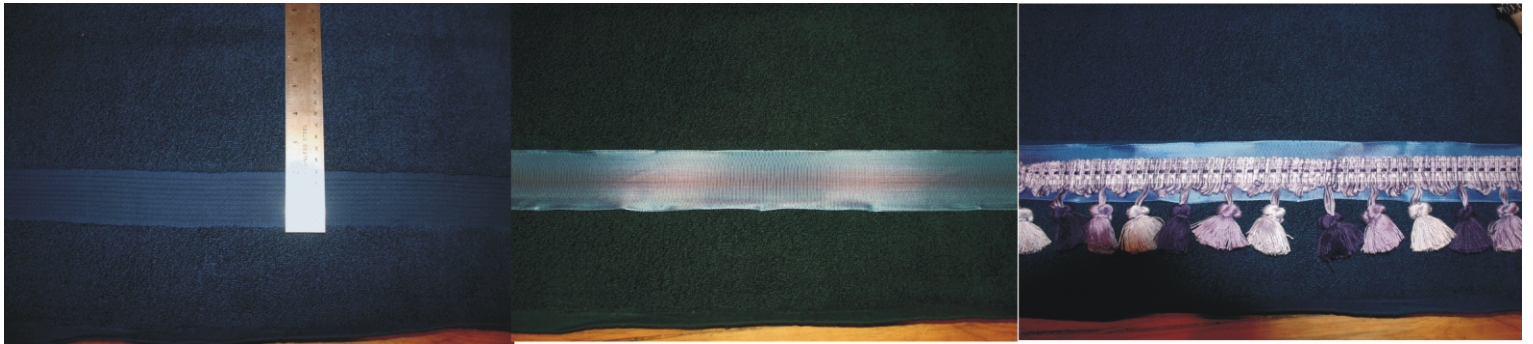
Hooping Tips

Use a sturdy tear away stabilizer when hooping towels. People may turn them over and you don't want to see cutaway when they do. Use a water soluble topping for the surface of the towel. This prevents the design from sinking into the terry. The easiest way to do this is to hoop all three together, stabilizer, towel and topping. Avoid using sticky backing when embroidering towels, Sticky backing doesn't create proper tension and can cause problems when the design is running, especially on big designs.

Towel Tips



Adding trim to towels can take an ordinary towel and make it become a thing of beauty. Most towels that you will find in a store have a band across the bottom. It is very difficult to find towels without the band. If you don't want to see the band when you display the towel it is very easy to cover it up with trim. The first step as illustrated in step one is to measure the band of the towel. This is very important when going to the fabric store to select trim. We recommend selecting the trim you like first and then matching the colors in your embroidery design to the trim. To successfully apply trim to the towel you will need a sewing machine or access to someone that has a sewing machine.



The first step as illustrated in step one is to measure the band of the towel, this is very important when going to your fabric store to select trim. For this towel we selected a two inch ribbon trim that fit perfectly in the band. Sew it onto the towel with a straight stitch, wrap a half inch of the ribbon around the back of the towel for a nice finished edge. If you want to further embellish the towel you can place a tassel trim directly over the ribbon this really makes the towel look like a work of art. Tack the tassel trim down with a walking stitch as well. Remember always do the embroidery first. Hooping the towel with all of that trim can be difficult.

Endless Borders

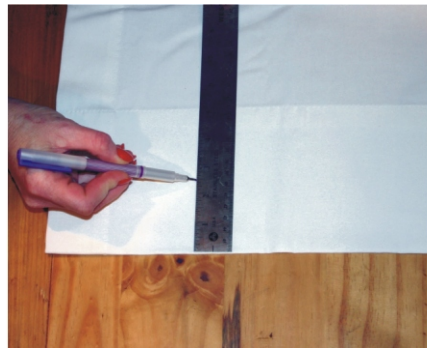


Nothing says elegance like an endless border, these designs work great on handkerchiefs, doilies, curtains, pillows, and of course curtains and valances. The first thing you must do is choose the right type of design. Some designs are created with repeat borders in mind and some aren't. Repeat borders are designed with an overlapping section, these are the most difficult to lay out and embroider properly so that is what we will focus on in this tutorial.

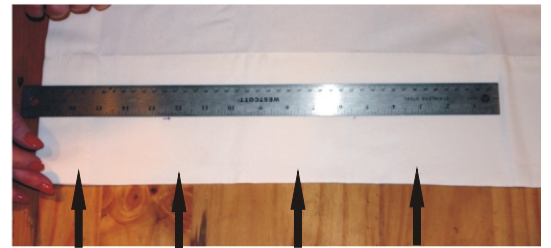
STEP 1



STEP 2



STEP 3

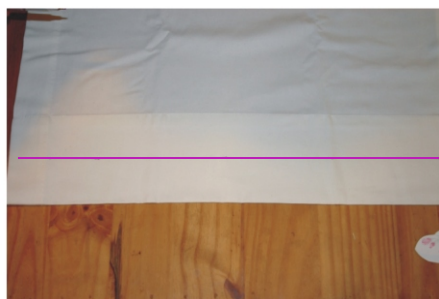


Step one illustrates the overlap section of the design we chose. Step two is where you are going to start measuring the valance. Lay the valance over a flat surface and mark with a disappearing ink pen halfway up the border on the valance, this will be the center point of the design. In step 3 we will continue placing marking dots in the exact center point along the towel every six inches or so.

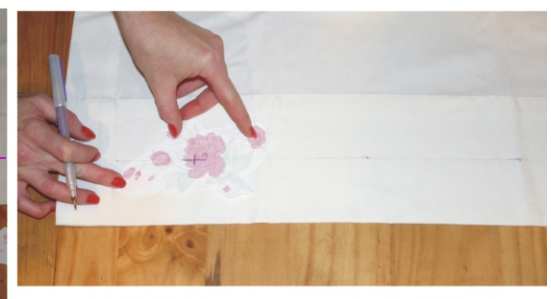
STEP 4



STEP 5



STEP 6



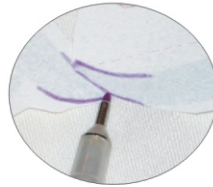
In step 4 we will connect all of the dots creating a line across the whole valance, this will be important when we place the designs. Step 5 illustrates the line. Print the design out that you want to embroider, printing two copies of the design will allow you to properly measure the repeat. Step 6 shows us placing the first design along the center line.

Endless Borders

STEP 7



STEP 8



STEP 9



Step seven shows the two printouts being placed side by side. Step eight shows the proper overlapping of designs that we are trying to achieve. Once you have the designs where you want them it is time to measure the distance between the center points. Step 9 shows the two designs and the cross hairs illustrate the two center points.

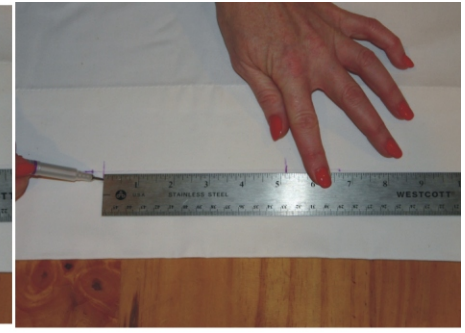
STEP 10



STEP 11



STEP 12

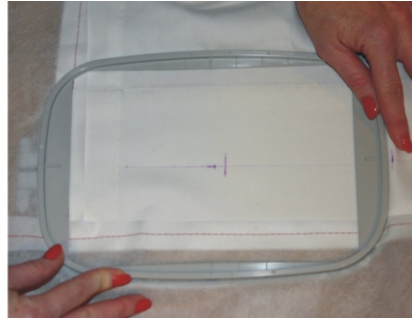


In step 10 we are taking our measurement. The center point of these two designs is 5.25" apart. Once we have that measurement step 11 shows us marking the point with an X along the horizontal line we have already drawn on the valance. We will continue marking the valance as far across as we want the design to repeat. The valance is now ready to hoop and embroider.

STEP 12



STEP 13



Step 12 illustrates how we attach a piece of cutaway stabilizer to the edge of the valance to make it more stable in the hoop. Simply use a basting stitch to affix it. When you hoop the design use standard hooping techniques, don't use sticky backing, sticky backing will not be stable enough for a long job like this and may cause puckering and registration problems.

Applique

Embroidering Applique

Cutting the Applique on the Machine

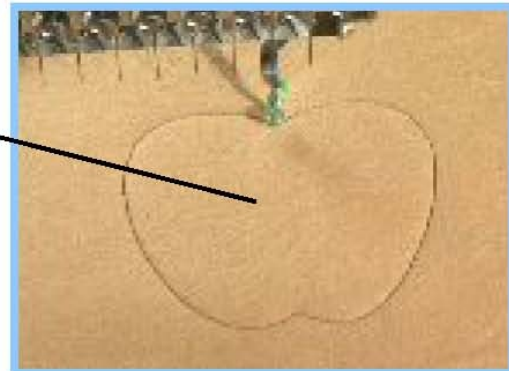
Applique is fun and looks great! This tutorial will teach you how and when to place and cut the material needed in applique designs.



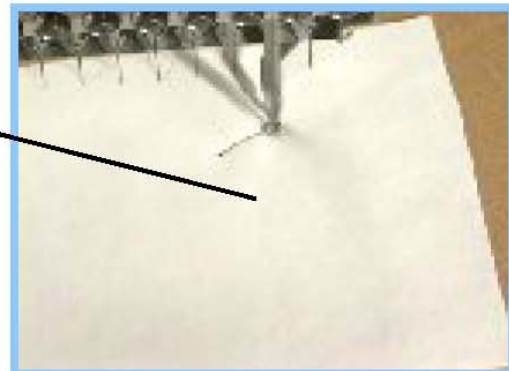
Step 1. Start sewing the design as you normally would. After the machine sews the outline/marking stitch be sure to stop the machine.



This is what the design will look like at that point. **Step 2.** would be to place the material over the outline stitch. Make sure the square is big enough to completely cover the stitch. Use light spray adhesive to hold the material down.



Step 3. Start the machine. The tack-down stitch will now sew on top of the applique securing it to the garment.



Applique

You can see in the picture to the right what the design will look like when the tack-stitch is completed.



Step 4. The next step is to completely cut around the tack-down stitch. We recommend applique scissors. Applique scissors prevent you from cutting through the garment by accident.



Step 5. After you are finished cutting the design out start the machine. The design will continue to sew and you are done with the applique portion of the design.

