

VOL.

1

ENHANCING YOUR IQ

WITH
Salima Jaffer

FANCY FILLS AND SHAPES

BACK TO SCHOOL PILLOW



baby lock

FOR THE LOVE OF SEWING

ENHANCING YOUR IQ

WITH
Salima Jaffer

BACK TO SCHOOL PILLOW

Supplies:

- ½ Yard solid blue fabric
- 1 Yard school design printed fabric
- Medium weight stabilizer
- Assorted colors of embroidery threads
- All-purpose sewing thread
- Basic sewing supplies
- 20” Pillow form

Instructions:

- 1) Hoop the stabilizer and the solid fabric in the machine hoop.
- 2) Bring up the final Pencil design you created and embroider the design using embroidery thread colors to coordinate with the school design printed fabric.
- 3) Once the embroidery is complete, remove the excess stabilizer.
- 4) Switch to sewing mode on the machine and thread with all-purpose thread.
- 5) Trim the piece down so that it is 14” wide by 14” tall.
- 6) From the print fabric cut four border pieces 3 1/4” wide by length of fabric.
- 7) Sew the horizontal border strips to the center embroidered square. Press. Trim off the excess length. Then sew the vertical strips to each end of the pillow front. Trim off the excess length to square up the front piece.
- 8) Using the remaining print fabric to cut two pieces 15 ¼” wide by 20 ½” tall for the backing. The backing will be two pieces that over lap for easy access to the pillow form.
- 9) Fold over one vertical side on each pillow back and create a 1” hem. Mirror the hems so you have a left and right back piece.
- 10) Lay the finished front piece with right side facing up, then align the backing pieces to match over lapping them. Pin in place.
- 11) Stitch around the outer edge with a ½” seam allowance.
- 12) Turn the pillow right side out. Press.
- 13) Insert the pillow form through the over lapped back sections.

Creating the Pencil Design:

1. Click on IQ Designer



2. Click on the Shapes Icon



3. Select the Square Shape



(Row 1 Column 1)

4. Click OK

5. Click on Size



6. Change the H = 7.50"

and the W=2.35"



7. Use the arrows and move the Rectangle Box towards the bottom of the screen

8. Click OK

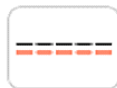
9. Click on the Line Region Property Icon



10. Select the Straight Line Icon



11. Select the Double Run Icon



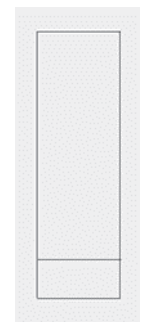
12. Click OK

13. Zoom in

14. Draw a line to create a smaller rectangle box at the bottom (the eraser part of the pencil)

15. If your line happens to extend beyond the rectangle box, no problem just use the Eraser Icon and delete it.

16. Zoom back to 100%



17. Let's draw the Pencil Tip – to do so you will use the Straight Line Icon (it should already be active)



18. Turn on the 1" Grid in the Settings Page

19. Now Draw the pencil tip. If your lines cross any of the previously created lines, no worries – we can delete those extra lines. It is better to have the lines cross, than to have a space because the fill will “leak”. The overlapped lines can be erased.

20. Next draw the line separating the Lead from the Pencil Tip

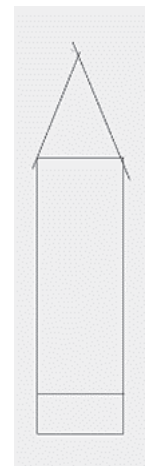
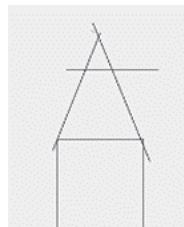
21. Click on the Line Region Property Icon

22. Select the Straight Line Icon

23. Select the Double Run Icon

24. Click OK

25. Draw the Lead part of the pencil



26. Now let's erase all the excess lines. To do that, Click on the Eraser Icon

27. Reduce the number to 10 and change the option to a Square. Click OK

28. Erase the Lines that extend beyond the pencil

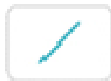
29. Click on Memory (For Destiny Click on the Memory Pocket with the Red Arrow)



30. Save it to the Machines Memory

31. Click on the Line Region Property Icon

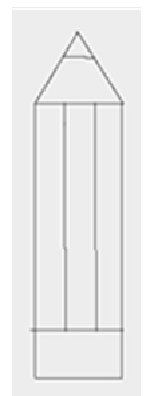
32. Click on the Straight Line Option



33. Select the Double Run Icon

34. Click OK

35. Draw a line dividing the pencil into three smaller rectangle boxes. You can eye ball it or if you would like you can turn on the 3/8" grid lines in the Settings Menu.



36. Again use the Eraser Icon to remove any overlapped the lines.
37. Click on the Eraser Icon
38. Reduce the number to 10 and change the option to Square. Click OK
39. Zoom in to about 400%
40. Delete the extra lines
41. Click Memory then Click on the Machines Memory

(For the Destiny Click on the Pocket with the Red Arrow



then click on Machine Machines Memory)

Creating the Fill Stitches:

1. Click on the Fill Region Property Icon



2. Leave it at the Default Weave Fill
3. Change Color to Gold

4. Click OK



5. Click on the Bucket/Cup Icon

6. Click inside the Eraser Section

7. Click on the Fill Region Property Icon

8. Change Color to Dark Blue

9. Click OK

10. Click inside the Lead Part of the Design

11. Click on the Fill Region Property Icon

12. Click on Fancy Fills



13. Click on Select



14. Select Fill No 006

15. Click OK

16. Change Color to Red

17. Click OK

18. Click on the Bucket/Cup Icon

19. Click Next to the Lead Area



20. Click on the Fill Region Property Icon

21. Click on Fancy Fills



22. Click on Select

23. Select Fill No 003

24. Click OK

25. Change Color to Pink

26. Click OK

27. Click inside the Left Half of the Pencil

28. Click on the Fill Region Property Icon

29. Click on Fancy Fills

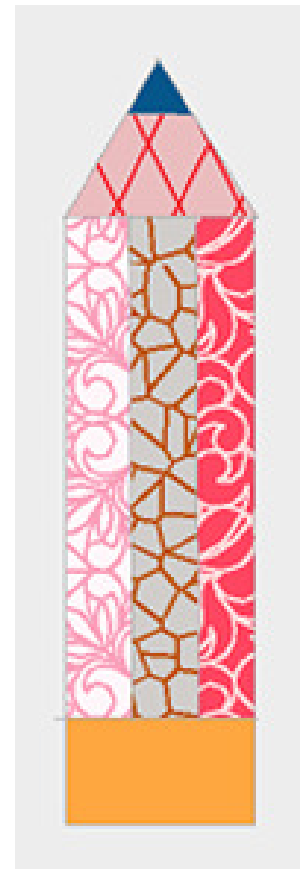


30. Click on Select

31. Select Fill No 010

32. Click OK

33. Change the Color to Orange



34. Click OK

35. Click inside the Center Box

36. Click on the Fill Region Property Icon

37. Click on Fancy Fills



38. Click on Select



39. Select Fill No 001

40. Click OK

41. Change Color to Light Pink

42. Click OK

43. Click on the Right Side of the Pencil

Creating the Outline Stitches:

1. Click on the Line Region Property Icon



2. Select the Candlewicking Stitch



3. Change the Color to Gold

4. Click OK

5. Click on the Bucket/Cup Icon

6. Touch all of the outlines parts of the pencil

7. Click on the Line Region Property Icon

8. Select the Freehand Pencil Open Ended Icon



9. Select the Double Run Icon

10. Change Color to Black

11. Click OK



12. Manually draw a swirly line

13. Click on Memory (For Destiny Click on the Memory Pocket with the Red Arrow)

14. Save it to the Machines Memory

15. Click Next

16. Use the Arrows Until the Diamond Fill is Selected

17. Change the Size to 75% and Click OK (For Destiny Click Set)

18. Change the Angle to 90 Degrees and Click OK (For Destiny Click Set)

19. Turn OFF the Outline and Click OK (For Destiny Click Set)

20. Use the arrows to select the left part of the pencil

21. Change the Size to 50% and Click OK (For Destiny Click Set)

22. Turn OFF the Outline and Click OK (For Destiny Click Set)

23. Use the arrows to select the middle part of the pencil

24. Change the Size to 50% and Click OK (For Destiny Click Set)

25. Turn OFF the Outline and Click OK (For Destiny Click Set)

26. Use the arrows to select the right part of the pencil

27. Change the Size to 50% and Click OK (For Destiny Click Set)

28. Turn OFF the Outline and Click OK (For Destiny Click Set)

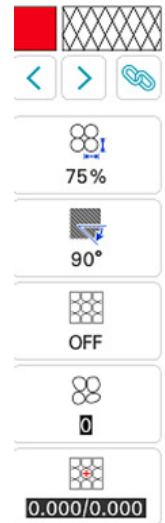
29. Use the arrows to select the swirly line

30. Change the Run Pitch to .120" and Click OK

31. Lastly, use the arrows to select the Candlewicking Stitch

32. Change the Size to .120" and Click OK

33. Click Next



34. Click Set and Click OK when the message pop up

(For Destiny, Click on Preview, OK, Set, OK)

35. Click on Embroidery

36. Click Memory then Click on the Machines Memory

*(For the Destiny Click on the Pocket with the Red Arrow
Machines Memory)*



then click on Machine