

# DESIGNS BY JUJU<sup>®</sup>

## Snowman Tree Skirt



- 5x7 Approximate Finished Diameter 36.5"
- 150x240 Approximate Finished Diameter 44"
- 6x10 Approximate Finished Diameter 47"
- 8x12 Approximate Finished Diameter 54"

# SUPPLY LIST

Fabrics, Batting, No Show Mesh Cut Away Stabilizer, Scissors, SF 101 interfacing, Thread, Bias Tape, Pins/Clips

## MATERIALS

### 5x7 HOOP

### 6x10 HOOP

### 8x12 HOOP

#### INNER BLOCKS

Batting <b>Cut 15</b>	5.5 x 8.5	6.5 x 11	8 x 13
Background Fabric <b>Cut 15</b>	7 x 10	8 x 12.5	9.5 x 14.5

#### BELIEVE BLOCK

Batting	6 x 8	6.5 x 9	8.5 x 11
Background Fabric	7.5 x 9.5	8 x 10.5	10 x 12.5
Hat Fabric	3x3	3.5x3.5	3.5x3.5
Sash Fabric	2x2.5	2.5x2.5	2.5x3
Snowman Fabric	3.5x4	4x4.5	4.5x5.5
Scarf Fabric	2.5x4.5	3x5.5	3x6

#### BIG HAT CARDINAL BLOCK

Batting	6 x 8	6.5 x 9	8.5 x 11
Background Fabric	7.5 x 9.5	8 x 10.5	10 x 12.5
Scarf Fabric	3x5	3.5x6	3.5x7
Snowman Fabric	3x3.5	3.5x4.5	4x5
Hat Fabric	4x5	5x6	5.5x7
Leaves Fabric	2.5x2.5	2.5x3	3x3.5
Glove Fabric	2x2.5	2x3	2.5x3

#### BRR BLOCK

Batting	6 x 8	6.5 x 9	8.5 x 11
Background Fabric	7.5 x 9.5	8 x 10.5	10 x 12.5
Snowman Fabric	4x5	5x6.5	5x7
Scarf Fabric	2.5x6	3x7.5	3x8.5
Ear muffs Fabric	2.5x4.5	2.5x5.5	3x6

**MATERIALS****5x7 HOOP****6x10 HOOP****8x12 HOOP****DECORATING TREE BLOCK**

Batting	6 x 8	6.5 x 9	8.5 x 11
Background Fabric	7.5 x 9.5	8 x 10.5	10 x 12.5
Hat Fabric	3x3	3x4	4x4
Snowman Fabric	4x4	5x4.5	5.5x5
Scarf Fabric	2.5x4	3x5	3.5x5.5
Tree Fabric	4.5x3.5	5.5x4	6x4.5

**GO TEAM BLOCK**

Batting	6 x 8	6.5 x 9	8.5 x 11
Background Fabric	7.5 x 9.5	8 x 10.5	10 x 12.5
Snowman Fabric	4x4.5	5x5.5	5.5x6.5
Scarf/Hat Fabric	5x6	6x6.5	6.5x8.5
Hat Trim Fabric	3.5x4	4.5x4.5	5x5

**HALLELUJAH BLOCK**

Batting	6 x 8	6.5 x 9	8.5 x 11
Background Fabric	7.5 x 9.5	8 x 10.5	10 x 12.5
Snowman Fabric	4x4	5x5	5.5x5.5
Hat Fabric	3x3	3.5x3.5	4x4
Scarf Fabric	3x4.5	3.5x5.5	3.5x6.5

**HAPPY CORNER BLOCK**

Batting	6 x 8	6.5 x 9	8.2 x 11
Background Fabric	7.5 x 9.5	8 x 10.5	10 x 12.5
Snowman Fabric	4x4.5	5x5.5	5.5x6
Hat/Scarf Fabric	4.5x5.5	5.5x7	6.5x7.5
Hat Trim Fabric	5x5	6x6	7x7

## MATERIALS

### 5x7 HOOP

### 6x10 HOOP

### 8x12 HOOP

#### HAPPY LEANING BLOCK

Batting	6 x 8	6.5 x 9	8.5 x 11
Background Fabric	7.5 x 9.5	8 x 10.5	10 x 12.5
Scarf Fabric	3x5.5	3.5x7	4x8
Snowman Fabric	4x4.5	5x5.5	5.5x6.5
Hat Fabric	3x3	3.5x3.5	4x4
Sash Fabric	2.5x2.5	3x3	3x3

#### HAPPY PIPE BLOCK

Batting	6 x 8	6.5 x 9	8.5 x 11
Background Fabric	7.5 x 9.5	8 x 10.5	10 x 12.5
Snowman Fabric	3x4.5	3.5x5.5	4x6.5
Scarf Fabric	2.5x5	3x6.5	3x7
Hat Fabric	3.5x4	4.5x5	5x5.5
Star Fabric	2x2	2.5x2.5	2.5x2.5

#### HATS OFF BLOCK

Batting	6 x 8	6.5 x 9	8.5 x 11
Background Fabric	7.5 x 9.5	8 x 10.5	10 x 12.5
Hat Fabric	2.5x2.5	3x3	3x3.5
Sash Fabric	2x2.5	2x3	2.3
Snowman Fabric	3.5x4	4.5x4.5	5x5
Scarf Fabric	2.5x5	3x6	3.5x6.5
House Fabric	2x2	2.5x2.5	2.5x2.5
Roof Fabric	2x2.5	2x2.5	2.5x3

#### JOY BLOCK

Batting	6 x 8	6.5 x 9	8.5 x 11
Background Fabric	7.5 x 9.5	8 x 10.5	10 x 12.5
Snowman Fabric	4x3.5	4.5x4.5	5x5
Scarf Fabric	2.5x3	3x3.5	3x4

**MATERIALS****5x7 HOOP****6x10 HOOP****8x12 HOOP****LET IT SNOW BLOCK**

Batting	6 x 8	6.5 x 9	8.5 x 11
Background Fabric	7.5 x 9.5	8 x 10.5	10 x 12.5
Snowman Fabric	4x5	5x6	5.5x6.5
Scarf/Hat Fabric	4.5x3.5	5x4.5	6x4

**LONG HAT BLOCK**

Batting	6 x 8	6.5 x 9	8.5 x 11
Background Fabric	7.5 x 9.5	8 x 10.5	10 x 12.5
Snowman Fabric	3.5x4.5	4x5.5	4.5x5
Hat/Scarf Fabric	5x6	6x7.5	6.5x8.5

**SINGING BLOCK**

Batting	6 x 8	6.5 x 9	8.5 x 11
Background Fabric	7.5 x 9.5	8 x 10.5	10 x 12.5
Lamp Top Fabric	1.5x2.5	1.5x2.5	1.5x3
Snowman Fabric	4x4	5x5	5.5x5.5
Scarf Fabric	3x5	3.5x6.5	4x7
Book Fabric	2.5x3	3x4	3x4

**SNOW HAPPY BLOCK**

Batting	6 x 8	6.5 x 9	8.5 x 11
Background Fabric	7.5 x 9.5	8 x 10.5	10 x 12.5
Snowman Fabric	4x5	5x7	6x8
Scarf/Glove Fabric	4x5.5	4.5x7	5x7.5

**SNOWFLAKE KISSES BLOCK**

Batting	6 x 8	6.5 x 9	8.5 x 11
Background Fabric	7.5 x 9.5	8 x 10.5	10 x 12.5
Snowman Fabric	4x5	5x7	6x8
Scarf/Hat Trim Fabric	4.5x4.5	5.5x5.5	6x6
Hat/Glove Fabric	4x6	5x7.5	5.5x8.5

## MATERIALS

### 5x7 HOOP

### 6x10 HOOP

### 8x12 HOOP

#### TIPPING HAT BLOCK

Batting	6 x 8	6.5 x 9	8.5 x 11
Background Fabric	7.5 x 9.5	8 x 10.5	10 x 12.5
Hat Fabric	4x4	5x5	5.5x5.5
Snowman Fabric	4x5	5x6	5.5x7
Scarf/Glove Fabric	3.5x6	4x7.5	4.5x8.5
Nose Fabric	1.5x2	2.5x2.5	3x2.5

#### WAVING BLOCK

Batting	6 x 8	6.5 x 9	8.5 x 11
Background Fabric	7.5 x 9.5	8 x 10.5	10 x 12.5
Ear Muffs Fabric	3x4.5	3.5x5.5	3.5x6.5
Snowman Fabric	5x4.5	6x5.5	7x6.5
Scarf/Gloves Fabric	4x6	5x7.5	5.5x8.5
Nose Fabric	1.5x2	2x2	2x2.5

#### WINKING BLOCK

Batting	6 x 8	6.5 x 9	8.5 x 11
Background Fabric	7.5 x 9.5	8 x 10.5	10 x 12.5
Snowman Fabric	4x4	5x5	5.5x5.5
Hat Fabric	3.5x3.5	4x4	4x4
Nose Fabric	2x2	2x2.5	2x2.5
Scarf Fabric	4x5.5	5x7	5.5x8
Gloves Fabric	2.5x4.5	3x4.5	3x6.5

#### WINTER WISHES BLOCK

Batting	6 x 8	6.5 x 9	8.5 x 11
Background Fabric	7.5 x 9.5	8 x 10.5	10 x 12.5
Snowman Fabric	4x5.5	4.5x6.5	5.5x7.5
Scarf Fabric	3x6	4x8	4x9
Nose Fabric	2x2	2.5x2	2.5x2.5

## MATERIALS

### 5x7 HOOP

### 6x10 HOOP

### 8x12 HOOP

## OUTER BLOCKS

Batting <b>Cut 15</b>	5x8.5	6.5x10.5	7x11.5
Background Fabric <b>Cut 15</b>	6x9.5	7.5x11.5	8x12.5

## BACKING

Fabric	40x40	50x50	57x57
--------	-------	-------	-------

NOTE: SF 101 added to the background fabric to prevent puckering when stitching out the designs to the blocks

NOTE: Middle blocks 1-15 do not need to be placed in the order as shown. They can be stitched together in any order you choose.

NOTE: There are 20 middle, you only have to choose 15 to stitch for the tree skirt.

NOTE: The inner and outer blocks have 2 design choices, snowflake or snowman parts. You can mix and match or choose one theme.

NOTE: You can use store bought bias tape or make your own. Length provided is the approximate needed to make a bow, but you can make your tape to the length of your choosing. Approximately 3 Yards needed.

NOTE HUS USERS!!! If you have the 150x240 hoop, please be sure to choose the files labeled as such and NOT 6x10. The 150x240 hoop is smaller than the universal 6x10 so you MUST use the correctly labeled files in the HUS folders. For fabric, follow the 6x10 cutting chart.

Sample layouts are shown on final page of instructions.

Approximate Fabric needed for project:

Batting: Can use crib to a twin size package

Fabric:

5x7 Inner-1 yard Middle-1 yard Outer-1 yard

6x10 Inner-1.5 yards Middle: 1.5 yards Outer 1.25 yards

8x12 Inner: 2.25 yards Middle-2 yards Outer-1.5 yards

# INNER SATIN SNOWFLAKE BLOCKS

**STEP 1:** Select a design.



**STEP 2:** Load design into machine.



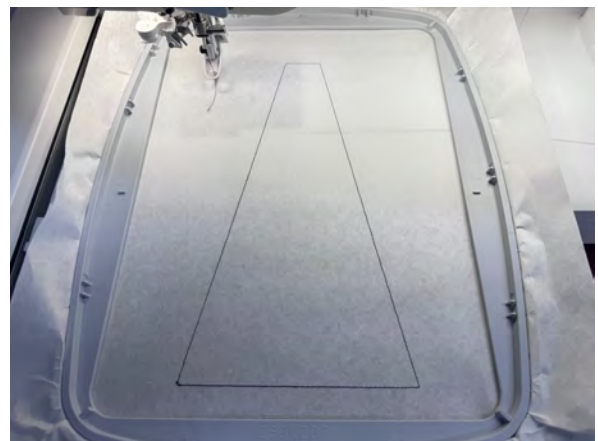
Before starting please double check that you have loaded the correct design size



**STEP 3:** Hoop a piece of stabilizer.



**STEP 4:** Stitch the placement line for the batting.

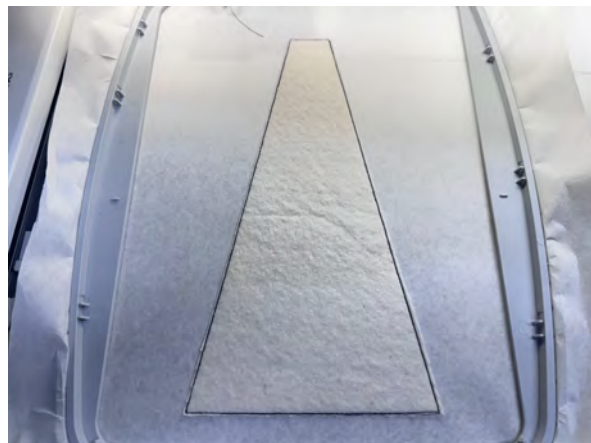




**STEP 5:** Cover placement line with batting, making sure all sides are completely covered.

Stitch tack down line.

Trim the batting as shown.



**STEP 6:** Use tack down line of batting for placement of background fabric.

Cover tack down line with background fabric, making sure all sides are covered.

Stitch tack down line.



**STEP 7:** The next few stitching steps are the decorative stitches for this block.



*Refer to color chart, included with download, for satin and design stitching sequence.*



**STEP 8:** Remove the block from the hoop and trim away excess stabilizer.

Trim the edges of the block so each side is 1/2" from the outer stitching line.



This block has 2 different themes and each have 3 different designs. You can mix and match or choose one theme. You must have a total of 15 inner blocks.



## OUTER SATIN SNOWFLAKE BLOCKS

**STEP 9:** Select a design.



**STEP 10:** Load design into machine.



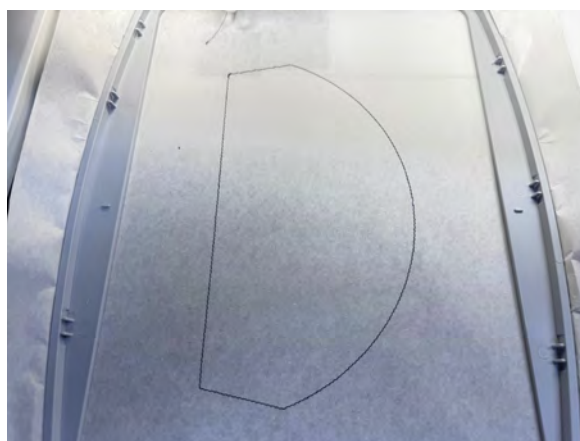
Before starting please double check that you have loaded the correct design size



**STEP 11:** Hoop a piece of stabilizer.



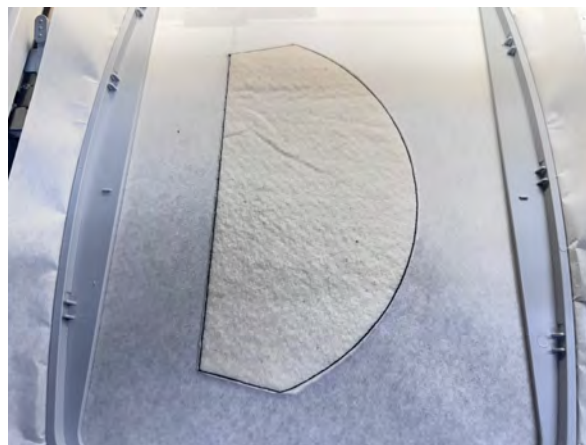
**STEP 12:** Stitch the placement line for the batting.



**STEP 13:** Cover placement line with batting, making sure all sides are completely covered.

Stitch tack down line.

Trim the batting as shown.



**STEP 14:** Use tack down line of batting for placement of background fabric.

Cover tack down line with background fabric, making sure all sides are covered.

Stitch tack down line.



**STEP 15:** The next few stitching steps are the decorative stitches for this block.



*Refer to color chart, included with download, for satin and design stitching sequence.*



**STEP 16:** Remove the block from the hoop and trim away excess stabilizer.

Trim the edges of the block so each side is 1/2" from the outer stitching line.

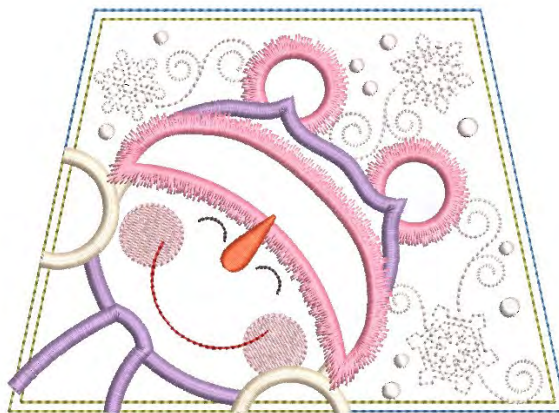


This design has 2 different themes and each have 3 different designs. You can mix and match or choose one theme. You must have a total of 15 outer blocks.



# MIDDLE BLOCKS

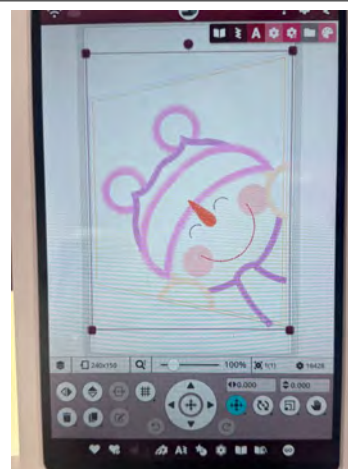
**STEP 17:** Select a design.



**STEP 18:** Load design into machine.



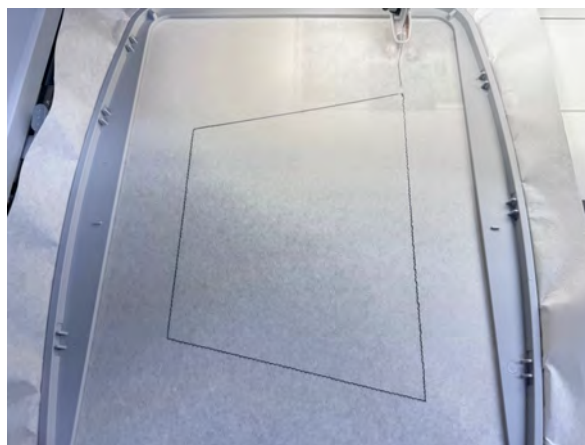
Before starting please double check that you have loaded the correct design size



**STEP 19:** Hoop a piece of stabilizer.



**STEP 20:** Stitch the placement line for the batting.



**STEP 21:** Cover placement line with batting, making sure all sides are completely covered.

Stitch tack down line.

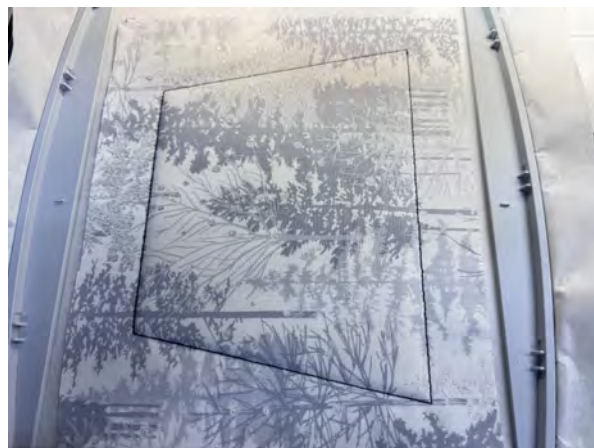
Trim the batting as shown.



**STEP 22:** Use tack down line of batting for placement of background fabric.

Cover tack down line with background fabric, making sure all sides are covered.

Stitch tack down line.



**STEP 23:** Use the applique method to complete the block.

For additional assistance with applique, please see applique tutorial included with the download (DBJJApliqueTutorial.pdf).



**STEP 24:** The next few stitching steps are the decorative and satin stitches for this block.



Refer to color chart, included with download, for satin and design stitching sequence.



**STEP 25:** Remove the block from the hoop and trim away excess stabilizer.

Trim the edges of the block so each side is 1/2" from the outer stitching line.



This block has 20 different snowman designs. You only need 15 middle blocks for the tree skirt.



## TREE SKIRT CONSTRUCTION

**STEP 26:** You now have all of your blocks stitched.

Decide how you want your skirt laid out, and lay it out as shown. You will be sewing the skirt together in 15 wedges. To keep it organized, pin together your wedges until they are sewn together.



**STEP 27:** Lay out your first wedge as shown.



**STEP 28:** We will start by sewing together the inner block and the middle block.

Flip the middle block up, right side down on inner block.

Pin or clip together.



**STEP 29:** Sew the blocks together, stitching just barely inside the outer most stitching line on the block.

Press open seam.



**STEP 30:** We will now attach the outer block to the previously sewn blocks.

Flip the outer block up, right side down on middle block.

Pin or clip together and sew. Press open seams.



**STEP 31:** Once all blocks are sewn together, your wedge should look as shown.



**STEP 32:** Repeat steps 28-30 to create all the wedges in the tree skirt.

We will now sew the wedges together to form the top of the tree skirt.

Begin with the back right wedge and sew together counter clockwise until all 15 are sewn together, leaving an opening.



**STEP 33:** Flip one wedge on top of the other, right side down on.

**MAKE SURE TO SEW THE CORRECT SIDE OF THE WEDGE.**

Pin or clip together and sew. Press open seams.



**STEP 34:** Repeat steps 32-33 thirteen more times for the remainder of the wedges until all wedges are sew together and look as shown.

 Be sure to leave a gap in the tree skirt, this will be the back side of the tree skirt.



**STEP 35:** Cut your backing according to the sizing in the supply list.

Lay the backing fabric so the right side is up. Center the tree skirt on the backing, right side down, and make sure there is an opening in the backing and hole in the middle.

Pin in place along the edges and along the center.



**STEP 36:** Sew the tree skirt to the backing, sewing just to the inside of the outermost stitch line.

Start at the top of one side of the opening, sew all the way around the bottom and back up to the top of the other side of the tree skirt opening.

The only opening should be the center small circle.





**STEP 37:** Once the tree skirt is sewn to the backing, trim the excess backing fabric as shown. (should mirror the tree skirt top)



*Be sure to clip along the curved edges of seam allowance to allow the edge of the skirt to lay flat once turned right side out*

**STEP 38:** Turn the tree skirt right side out through the center opening.



Make sure to push out the corners and round out the outer blocks.

Press the seams flat.

**STEP 39:** Top stitch the edge of the tree skirt, starting at one side of the opening, all the way around to the other side.



**STEP 40:** Use the stitch in the ditch method to sew each wedge's seam lines to the backing.



**STEP 41:** Place the bias tape on the center of the tree skirt, sandwich the tree skirt between the bias tape.

Pin or clip the bias tape to the tree skirt.



**STEP 42:** Sew the bias tape, about 1/8" from the bottom of the bias tape to the tree skirt.



**CONGRATULATIONS!! YOUR TREE SKIRT IS COMPLETE!**



# SAMPLE LAYOUTS

