

WINTER FUN

For this collection, we created whimsical winter scenes, mostly of snowmen enjoying themselves in their natural environment! These designs have characters that explode with joy right out of the center of their quilt blocks and stitch onto the folded fabric borders. Some scenes are even made up of multiple blocks! All the blocks can be combined any which way you like, or even framed as individual seasonal artwork to hang on your walls. We know you are going to have *snow* much fun making this collection.

The best part about this collection is that you can combine it with other Anita Goodesign collections! This collection is part of the Mix & Match quilt line. These designs come in 5", 6", 7", 8", and 9" blocks and are fully interchangeable with other Mix & Match collections.

Bryan Russell
Anita Goodesign, Inc.



E A FM Q TS T FF C LS FS Z CW L HSSW

Visit our website www.anitagoodesignonline.com for additional information and videos.

SNOW MUCH FUN!

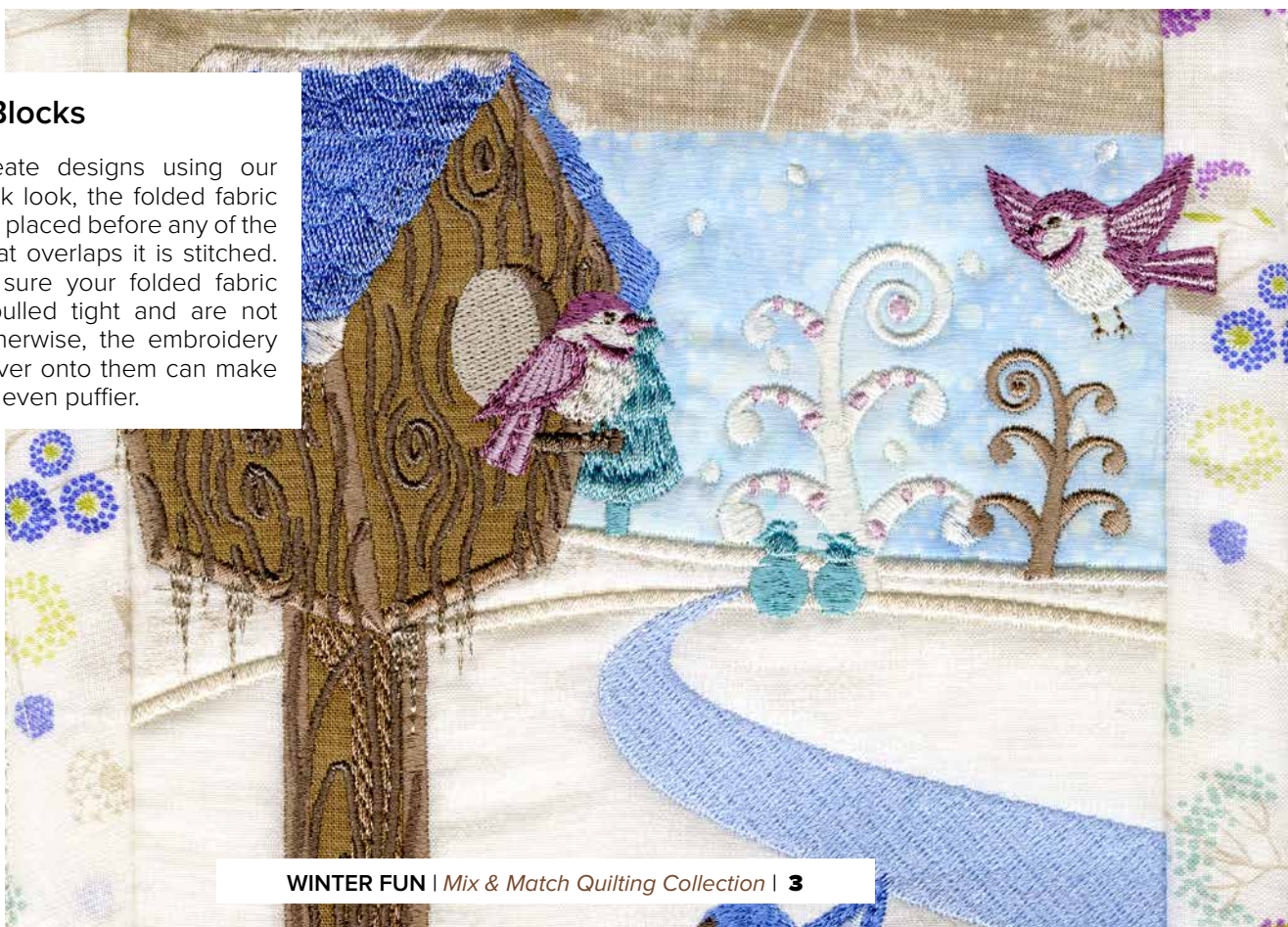


Working with Textured Fabric

We decided to use some fleece fabrics for the snowmen appliqué. It gives them the appearance of being soft, fluffy snowmen and not giant balls of ice. Textured fabrics can always enhance the look of your designs, so don't be afraid to play around with different kinds. If you've never tried using textured appliqué, here's a tip. A water-soluble topping will help keep satin stitches around textured fabric nice and smooth, so that none of the texture pokes through the stitches and none of the stitches sink into the fabric.

Exploded Blocks

When we create designs using our exploded block look, the folded fabric borders will be placed before any of the embroidery that overlaps it is stitched. Always make sure your folded fabric borders are pulled tight and are not puffed up. Otherwise, the embroidery that crosses over onto them can make the fabric look even puffier.



COMBINING BLOCK PAIRS

Companion Blocks

We created 16 blocks that pair together in this collection. Some of the blocks are horizontal, and others, like this one, are combined to create a vertical scene. While these blocks can be used by themselves, they look even better when put with their sister blocks!

Where to Find the Companion Blocks

In the design pages of this tutorial, files 1-4 are solo and do not have a companion block. Designs 5-12 are horizontal companion blocks, and 13-20 are the vertical companion blocks. Each pair is put together on one page, then the steps for both blocks will be on the next. This makes it easy to see which blocks were intended to go together.



WINTER FUN QUILT MOCK-UP



As you can see, the multi-blocks and the solo blocks all look great together to make a fun winter-time quilt!

DESIGN SIZE GUIDE



Designs with the letter **“AA”** at the end are the largest designs for a hoop that can embroider at least 9” x 9”.



Designs with the letter **“A”** at the end are the large designs for a hoop that can embroider at least 8” x 8”.



Designs with the letter **“B”** at the end are the medium designs for a hoop that can embroider at least 7” x 7”.



Designs with the letter **“C”** at the end are the small designs for a hoop that can embroider at least 6” x 6”.

Each of the block designs come in five sizes. Each of the 5 sizes look wonderful. Of course, the larger sizes take longer to embroider. We created all of our samples using the “A” size.



Designs with the letter **“D”** at the end are the smallest designs for a hoop that can embroider at least 5” x 5”.

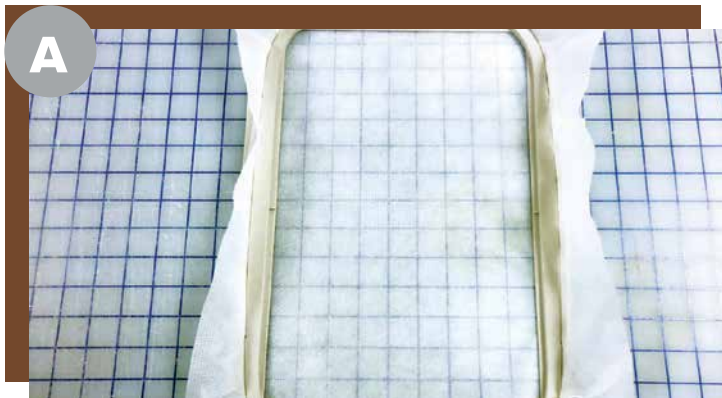
ANATOMY OF THE DESIGN



We created this tutorial to make your project as simple as possible. Our “paint by numbers” style of instructions will allow you to navigate through all the steps of each project effortlessly. As you can see above we have a photograph of a finished project with numbers on each folded fabric piece. These numbers will correspond with the instructions under

“Steps” on the design pages letting you know the order in which each piece of folded fabric is added. We suggest gathering all of your fabrics and laying them out in order to make sure you like the combination of colors before picking your threads or getting started. As always we recommend looking over each project thoroughly before beginning.

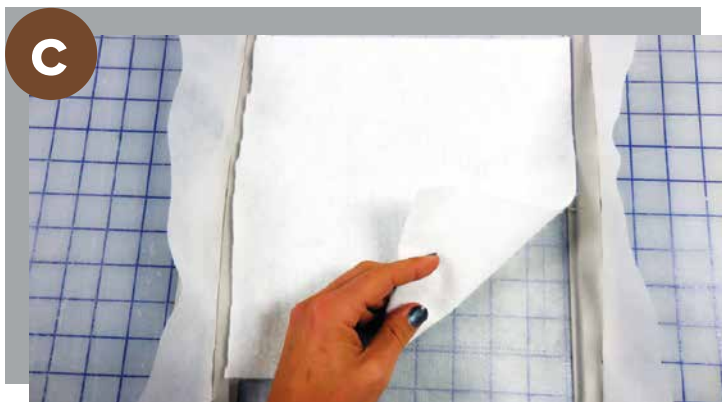
STEP-BY-STEP INSTRUCTIONS



To start, hoop a piece of No-show Mesh stabilizer.



Stitch step 1 of the design. This is the squaring stitch.



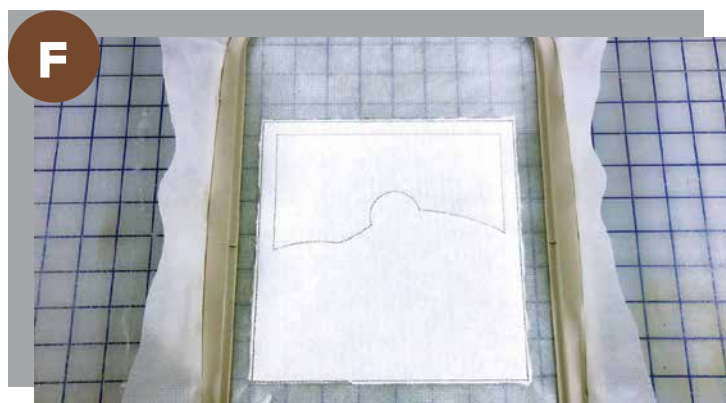
Place a piece of batting over the top of the squaring stitches. Be sure to completely cover all sides of the squaring stitch.



Then, run the tacking stitch for the batting. This step will hold the batting to the stabilizer.



Trim any excess batting away from the outside of this tacking stitch. This ensures the batting is not in the seam allowance, making the blocks easier to stitch together.

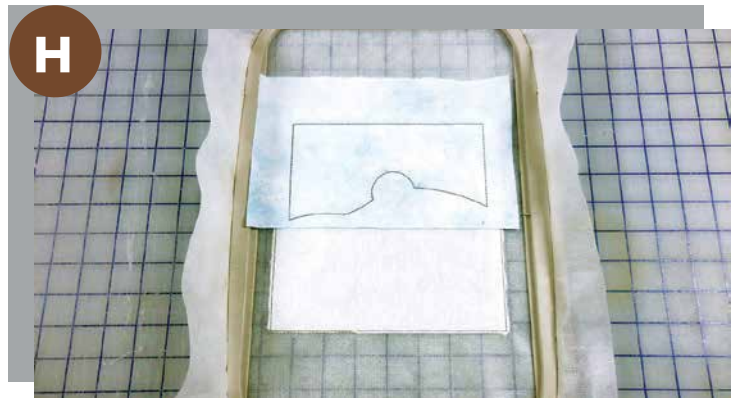


Step 3 of the design is the placement stitch for the first appliqué. This will show you where to place that fabric.

STEP-BY-STEP INSTRUCTIONS



Place your piece of fabric, right-side up, so it covers the placement stitch.



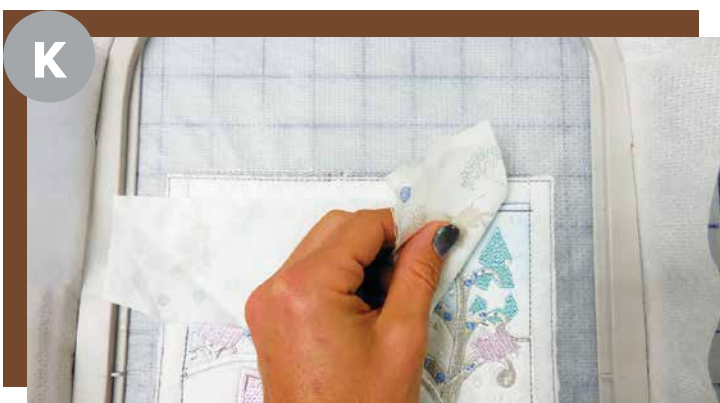
This next step will be the tack down stitch for the fabric.



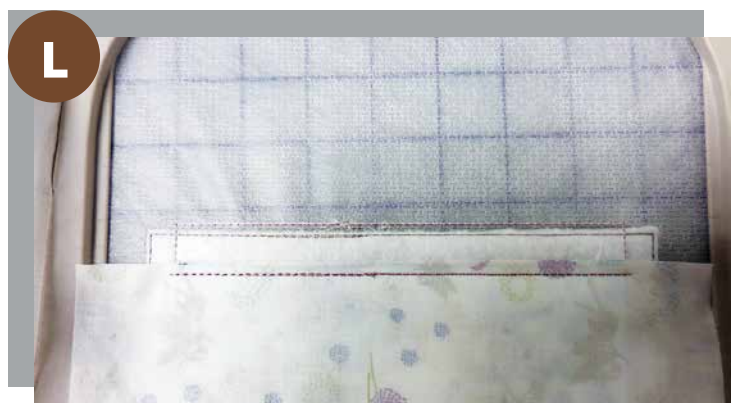
Once the tack down stitch is complete, remove the hoop from the machine and place it on a flat surface. Use scissors to carefully trim the excess base fabric from the tacking stitch.



Run any additional appliqué and embroidery steps. Now for the folded fabric border. You will begin each piece of folded fabric with a placement stitch.



After the placement stitch, you will then place your piece of folded fabric right-side down so $\frac{1}{4}$ " of the fabric overlaps the inner edge of the placement stitch.



Stitch the next step of the design. This is the folding stitch.

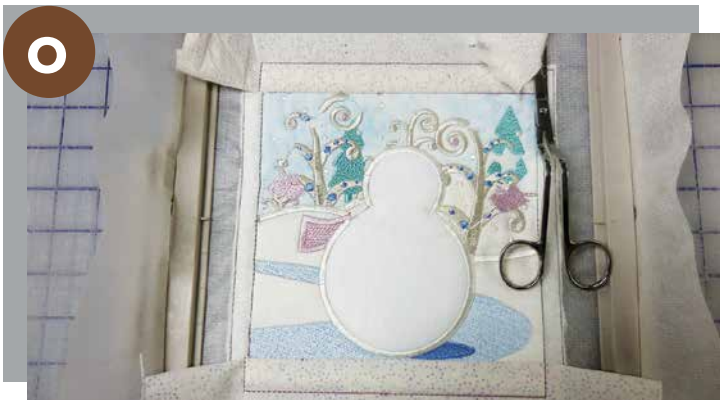
STEP-BY-STEP INSTRUCTIONS



Once the folding stitch is complete, fold the fabric over so it forms a tight crease against the folding stitch. We use tape or spray adhesive to secure the fabric in place.



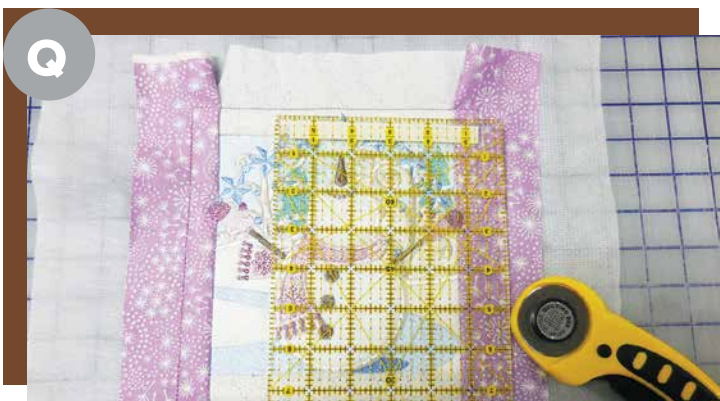
Stitch the next step. This is the tack down stitch for the folded fabric. Add your next piece of folded fabric using these same steps, J-N.



You will then want to trim the fabric from the ends. You do this for the first two pieces of folded fabric, because extra fabric there will encourage the presser foot to get caught and to pull the design. You will have the other two pieces of folded fabric to cover those corners.



Add your next two pieces of folded fabric using the same steps: placement stitch, folding stitch, and tack down stitch. Do not trim the excess ends. This is an example of what the quilt block will look like once all the folded fabric border pieces are in place.



You will then remove the design from the hoop. Using a ruler and rotary cutter, trim all sides to a 1/2" seam allowance.



A finished quilt block will look like this!

THE BIRD FEEDER



WFSN1

- AA - Size - 9.2" x 9.2" (Stitches - 49024)
 A - Size - 7.8" x 7.8" (Stitches - 39687)
 B - Size - 6.8" x 6.8" (Stitches - 33172)
 C - Size - 5.9" x 5.9" (Stitches - 27676)
 D - Size - 4.8" x 4.8" (Stitches - 22072)

STEPS

1. Placement Stitch - place batting
2. Tack Down Stitch - trim batting
3. Placement Stitch - place first appliqué
4. Tack Down Stitch - trim fabric
5. Placement Stitch - place second appliqué
6. Tack Down Stitch - trim fabric
7. Placement Stitch - place third appliqué
8. Tack Down Stitch - trim fabric
9. Placement Stitch - place fourth appliqué
10. Tack Down Stitch - trim fabric
11. 730 - white snow
12. 3761 - blue sidewalk
13. 3763 - snowman's shadow
14. 3761 - ice puddles
15. 2040 - tree
16. 4321 - silver trees
17. 730 - white trees
18. 2040 - gloves
19. 730 - snowman satin stitch and snow
20. 453 - scarf
21. 652 - cheeks
22. 451 - snowman arms and details
23. Placement Stitch - folded fabric 1
24. Folding Stitch - folded fabric 1
25. Tack Down Stitch - folded fabric 1
26. Placement Stitch - folded fabric 2
27. Folding Stitch - folded fabric 2
28. Tack Down Stitch - folded fabric 2
29. Placement Stitch - folded fabric 3
30. Folding fabric - folded fabric 3
31. Tack Down Stitch - folded fabric 3
32. Placement Stitch - folded fabric 4
33. Folding Stitch - folded fabric 4
34. Tack Down Stitch - folded fabric 4
35. 652 - birds and tree details
36. 453 - snowman hat and details
37. 1608 - snowman hat and bird details
38. 4321 - stars on scarf
39. 730 - seeds
40. 4321 - bird food
41. 451 - nose on snowman



WFSN2

- AA - Size - 9.2" x 9.2" (Stitches - 48141)
- A - Size - 7.8" x 7.8" (Stitches - 39016)
- B - Size - 6.8" x 6.8" (Stitches - 32762)
- C - Size - 5.9" x 5.9" (Stitches - 27400)
- D - Size - 4.8" x 4.8" (Stitches - 21757)

STEPS

1. Placement Stitch - place batting
2. Tack Down Stitch - trim batting
3. Placement Stitch - place first appliqué
4. Tack Down Stitch - trim fabric
5. Placement Stitch - place second appliqué
6. Tack Down Stitch - trim fabric
7. Placement Stitch - place third appliqué
8. Tack Down Stitch - trim fabric
9. Placement Stitch - place fourth appliqué
10. Tack Down Stitch - trim fabric
11. 730 - white snow
12. 3761 - blue sidewalk
13. 3763 - shadow on blue sidewalk
14. 4321 - silver trees
15. 2040 - green Christmas trees
16. 4321 - silver trees
17. 652 - purple dots on trees
18. 3763 - blue dots on trees
19. 1652 - gloves and back end of scarf
20. 730 - outline of snowman white snow falling
21. Placement Stitch - folded fabric 1
22. Folding Stitch - folded fabric 1
23. Tack Down Stitch - folded fabric 1
24. Placement Stitch - folded fabric 2
25. Folding Stitch - folded fabric 2
26. Tack Down Stitch - folded fabric 2
27. Placement Stitch - folded fabric 3
28. Folding fabric - folded fabric 3
29. Tack Down Stitch - folded fabric 3
30. Placement Stitch - folded fabric 4
31. Folding Stitch - folded fabric 4
32. Tack Down Stitch - folded fabric 4
33. 453 - buttons and smile
34. 1652 - front of scarf
35. 1608 - tips of gloves
36. 1608 - snowflake design on scarf and scarf ends.
37. 1608 - detail on scarf end
38. 453 - arms
39. 453 - carrot nose
40. 3763 - stars
41. 4761 - stars

FIGURE SKATER



WFSN3

- AA - Size - 9.2" x 9.2" (Stitches - 34041)
 A - Size - 7.8" x 7.8" (Stitches - 27938)
 B - Size - 6.8" x 6.8" (Stitches - 23596)
 C - Size - 5.9" x 5.9" (Stitches - 19726)
 D - Size - 4.8" x 4.8" (Stitches - 15743)

STEPS

1. Placement Stitch - place batting
2. Tack Down Stitch - trim batting
3. Placement Stitch - place first appliqué
4. Tack Down Stitch - trim fabric
5. Placement Stitch - place second appliqué
6. Tack Down Stitch - trim fabric
7. Placement Stitch - place third appliqué
8. Tack Down Stitch - trim fabric
9. Placement Stitch - place fourth appliqué
10. Tack Down Stitch - trim fabric
11. Placement Stitch - place fifth appliqué
12. Tack Down Stitch - trim fabric
13. 730 - white tree and snow
14. G27 - silver tree
15. 2040 - trees
16. 730 - snow
17. 3761 - blue sidewalk
18. 3763 - pond satin stitch
19. 3761 - shadow on pond
20. G27 - pond highlights
21. 730 - snowman satin stitch
22. Placement Stitch - folded fabric 1
23. Folding Stitch - folded fabric 1
24. Tack Down Stitch - folded fabric 1
25. Placement Stitch - folded fabric 2
26. Folding Stitch - folded fabric 2
27. Tack Down Stitch - folded fabric 2
28. Placement Stitch - folded fabric 3
29. Folding fabric - folded fabric 3
30. Tack Down Stitch - folded fabric 3
31. Placement Stitch - folded fabric 4
32. Folding Stitch - folded fabric 4
33. Tack Down Stitch - folded fabric 4
34. 1608 - scarf
35. 451 - arms
36. 2040 - scarf highlights and gloves
37. 652 - cheeks
38. 451 - nose
39. 453 - feet and buttons
40. 4321 - blades on shoes
41. 3763 - blue dots on white tree
42. 6542 - purple dot on white tree

SNOW SHOVELER



WFSN4

AA - Size - 9.2" x 9.2" (Stitches - 48144)

A - Size - 7.8" x 7.8" (Stitches - 39198)

B - Size - 6.8" x 6.8" (Stitches - 32976)

C - Size - 5.9" x 5.9" (Stitches - 27337)

D - Size - 4.8" x 4.8" (Stitches - 21647)

STEPS

1. Placement Stitch - place batting
2. Tack Down Stitch - trim batting
3. Placement Stitch - place first appliqué
4. Tack Down Stitch - trim fabric
5. Placement Stitch - place second appliqué
6. Tack Down Stitch - trim fabric
7. Placement Stitch - place third appliqué
8. Tack Down Stitch - trim fabric
9. Placement Stitch - place fourth appliqué
10. Tack Down Stitch - trim fabric
11. 730 - white tree
12. 4321 - silver tree
13. 2040 - trees
14. 4321 - shadows in snow
15. Placement Stitch - folded fabric 1
16. Folding Stitch - folded fabric 1
17. Tack Down Stitch - folded fabric 1
18. Placement Stitch - folded fabric 2
19. Folding Stitch - folded fabric 2
20. Tack Down Stitch - folded fabric 2
21. Placement Stitch - folded fabric 3
22. Folding fabric - folded fabric 3
23. Tack Down Stitch - folded fabric 3
24. Placement Stitch - folded fabric 4
25. Folding Stitch - folded fabric 4
26. Tack Down Stitch - folded fabric 4
27. Placement Stitch - place fifth appliqué
28. Tack Down Stitch - trim fabric
29. 1608 - ear muff and glove
30. 3761 - shovel
31. 730 - shovel highlight
32. 730 - plowed snow
33. 453 - shovel handle
34. 652 - cheeks
35. 451 - arms
36. 3763 - scarf
37. 453 - face and buttons
38. 1608 - ear muff and glove
39. 2040 - stripes on glove and ear muff band
40. 451 - top of shovel handle
41. 652 - purple dots on white tree

A SEAT IN THE PARK



WFSN5

- AA - Size - 9.2" x 9.2" (Stitches - 49722)
- A - Size - 7.8" x 7.8" (Stitches - 40637)
- B - Size - 6.8" x 6.8" (Stitches - 34425)
- C - Size - 5.9" x 5.9" (Stitches - 28811)
- D - Size - 4.8" x 4.8" (Stitches - 22940)

WFSN6

- AA - Size - 9.2" x 9.2" (Stitches - 51854)
- A - Size - 7.8" x 7.8" (Stitches - 41784)
- B - Size - 6.8" x 6.8" (Stitches - 34947)
- C - Size - 5.9" x 5.9" (Stitches - 29005)
- D - Size - 4.8" x 4.8" (Stitches - 22930)

A SEAT IN THE PARK

WFSN5

STEPS

1. Placement Stitch - place batting
2. Tack Down Stitch - trim batting
3. Placement Stitch - place first appliqué
4. Tack Down Stitch - trim fabric
5. Placement Stitch - place second appliqué
6. Tack Down Stitch - trim fabric
7. Placement Stitch - place third appliqué
8. Tack Down Stitch - trim fabric
9. 730 - white tree and snow
10. 451 - taupe tree
11. 2040 - tree
12. 3761 - blue sidewalk
13. 2040 - snowmen in background
14. Placement Stitch - place fourth appliqué
15. Tack Down Stitch - trim fabric
16. 451 - birdhouse stand satin stitch
17. 730 - snow at base of birdhouse
18. Placement Stitch - folded fabric 1
19. Folding Stitch - folded fabric 1
20. Tack Down Stitch - folded fabric 1
21. Placement Stitch - folded fabric 2
22. Folding Stitch - folded fabric 2
23. Tack Down Stitch - folded fabric 2
24. Placement Stitch - folded fabric 3
25. Folding Stitch - folded fabric 3
26. Tack Down Stitch - folded fabric 3
27. Placement Stitch - folded fabric 4
28. Folding Stitch - folded fabric 4
29. Tack Down Stitch - folded fabric 4
30. Placement Stitch - place fifth appliqué
31. Tack Down Stitch - trim fabric
32. Placement Stitch - place sixth appliqué
33. Tack Down Stitch - trim fabric
34. 451 - birdhouse satin stitch
35. 453 - bird house decorative stitching
36. G27 - ice on birdhouse
37. 3763 - birdhouse roof
38. 730 - bird bodies and snow
39. 453 - birdhouse bird stand
40. 4321 - birdhouse hole
41. 1608 - bird highlights
42. 652 - bird highlights
43. 3763 - bird
44. 3761 - bird highlights
45. 453 - bird details
46. 451 - bird details
47. 652 - purple dots on white tree
48. 652 - purple dot on brown tree

WFSN6

STEPS

1. Placement Stitch - place batting
2. Tack Down Stitch - trim batting
3. Placement Stitch - place first appliqué
4. Tack Down Stitch - trim fabric
5. Placement Stitch - place second appliqué
6. Tack Down Stitch - trim fabric
7. Placement Stitch - place third appliqué
8. Tack Down Stitch - trim fabric
9. Placement Stitch - place fourth appliqué
10. Tack Down Stitch - trim fabric
11. 4321 - bench shadow
12. 4321 - silver trees
13. 2040 - green Christmas tree
14. 730 - snow, white trees and falling snow
15. 453 - bench legs
16. 451 - bench
17. 730 - outline of snowmen
18. 451 - arms
19. 1608 - dark purple scarf, gloves and earmuff
20. 3761 - light blue scarf and gloves
21. 3763 - dark blue scarf
22. 3761 - blue sidewalk
23. Placement Stitch - folded fabric 1
24. Folding Stitch - folded fabric 1
25. Tack Down Stitch - folded fabric 1
26. Placement Stitch - folded fabric 2
27. Folding Stitch - folded fabric 2
28. Tack Down Stitch - folded fabric 2
29. Placement Stitch - folded fabric 3
30. Folding Stitch - folded fabric 3
31. Tack Down Stitch - folded fabric 3
32. Placement Stitch - folded fabric 4
33. Folding Stitch - folded fabric 4
34. Tack Down Stitch - folded fabric 4
35. 1608 - dark purple bird sections
36. 652 - light purple wings
37. 652 - light purple bird bodies
38. 453 - gray hat, eyes, smile, buttons and bird details
39. 451 - dark blue beaks and legs
40. 652 - cheeks and scarf stripes
41. 2040 - green buttons, earmuff, and scarf stripes
42. 3763 - dark blue snow
43. 451 - carrot nose
44. 3763 - hat band
45. 2040 - holly
46. 1608 - holly berries

A GIFT FOR YOU



WFSN7

AA - Size - 9.2" x 9.2" (Stitches - 45722)
 A - Size - 7.8" x 7.8" (Stitches - 37385)
 B - Size - 6.8" x 6.8" (Stitches - 31339)
 C - Size - 5.9" x 5.9" (Stitches - 26219)
 D - Size - 4.8" x 4.8" (Stitches - 20977)

WFSN8

AA - Size - 9.2" x 9.2" (Stitches - 46830)
 A - Size - 7.8" x 7.8" (Stitches - 37746)
 B - Size - 6.8" x 6.8" (Stitches - 31536)
 C - Size - 5.9" x 5.9" (Stitches - 26113)
 D - Size - 4.8" x 4.8" (Stitches - 20717)

WFSN7

STEPS

1. Placement Stitch - place batting
2. Tack Down Stitch - trim batting
3. Placement Stitch - place first appliqué
4. Tack Down Stitch - trim fabric
5. Placement Stitch - place second appliqué
6. Tack Down Stitch - trim fabric
7. Placement Stitch - place third appliqué
8. Tack Down Stitch - trim fabric
9. 730 - white trees and snow
10. G27 - silver trees
11. 2040 - trees
12. 730 - snow
13. Placement Stitch - folded fabric 1
14. Folding Stitch - folded fabric 1
15. Tack Down Stitch - folded fabric 1
16. Placement Stitch - folded fabric 2
17. Folding Stitch - folded fabric 2
18. Tack Down Stitch - folded fabric 2
19. Placement Stitch - folded fabric 3
20. Folding Stitch - folded fabric 3
21. Tack Down Stitch - folded fabric 3
22. Placement Stitch - folded fabric 4
23. Folding Stitch - folded fabric 4
24. Tack Down Stitch - folded fabric 4
25. Placement Stitch - place fourth appliqué
26. Tack Down Stitch - trim fabric
27. Placement Stitch - place fifth appliqué
28. Tack Down Stitch - trim fabric
29. Placement Stitch - place sixth appliqué
30. Tack Down Stitch - trim fabric
31. 3761 - blue sidewalk
32. 730 - snowman satin stitch
33. 1608 - present satin stitch
34. 3763 - present bow and ribbons
35. 453 - arm
36. 451 - taupe on scarf
37. 3761 - gloves
38. 730 - falling snow
39. 652 - cheeks
40. 453 - hat and face
41. 1608 - purple on scarf and hat
42. 3761 - light blue on hat and ribbon
43. 2040 - holly
44. 1608 - berries
45. 451 - nose
46. 3763 - blue dots on white trees

WFSN8

STEPS

1. Placement Stitch - place batting
2. Tack Down Stitch - trim batting
3. Placement Stitch - place first appliqué
4. Tack Down Stitch - trim fabric
5. Placement Stitch - place second appliqué
6. Tack Down Stitch - trim fabric
7. Placement Stitch - place third appliqué
8. Tack Down Stitch - trim fabric
9. 4321 - gray trees
10. 2040 - green tree
11. 730 - Satin Stitch - snow
12. 3761 - blue sidewalk
13. Placement Stitch - folded fabric 1
14. Folding Stitch - folded fabric 1
15. Tack Down Stitch - folded fabric 1
16. Placement Stitch - folded fabric 2
17. Folding Stitch - folded fabric 2
18. Tack Down Stitch - folded fabric 2
19. Placement Stitch - folded fabric 3
20. Folding Stitch - folded fabric 3
21. Tack Down Stitch - folded fabric 3
22. Placement Stitch - folded fabric 4
23. Folding Stitch - folded fabric 4
24. Tack Down Stitch - folded fabric 4
25. Placement Stitch - place fourth appliqué
26. Tack Down Stitch - trim fabric
27. 3763 - shadow
28. 730 - Satin Stitch - snowman
29. 652 - belly of bird
30. 1608 - dark purple body of bird
31. 453 - beak and feet of bird
32. 453 - eyes, smile, and buttons
33. 453 - stick arms
34. 652 - cheeks
35. 451 - nose
36. 453 - scarf and hat
37. 4321 - scarf details
38. 1608 - dark purple base on present
39. 652 - light purple highlight on present
40. 3761 - blue on bottom present
41. 3761 - blue on top present
42. 1608 - dark purple on top present and bow
43. 652 - light purple bow highlight
44. 2040 - mittens
45. 4321 - mitten details
46. 3763 - dots on trees



WFSN9

- AA - Size - 9.2" x 9.2" (Stitches - 43243)
- A - Size - 7.8" x 7.8" (Stitches - 34927)
- B - Size - 6.8" x 6.8" (Stitches - 29176)
- C - Size - 5.9" x 5.9" (Stitches - 24097)
- D - Size - 4.8" x 4.8" (Stitches - 18892)

WFSN10

- AA - Size - 9.2" x 9.2" (Stitches - 46029)
- A - Size - 7.8" x 7.8" (Stitches - 37108)
- B - Size - 6.8" x 6.8" (Stitches - 31055)
- C - Size - 5.9" x 5.9" (Stitches - 25620)
- D - Size - 4.8" x 4.8" (Stitches - 19969)

WFSN9

STEPS

1. Placement Stitch - place batting
2. Tack Down Stitch - trim batting
3. Placement Stitch - place first appliqué
4. Tack Down Stitch - trim fabric
5. Placement Stitch - place second appliqué
6. Tack Down Stitch - trim fabric
7. Placement Stitch - place third appliqué
8. Tack Down Stitch - trim fabric
9. Placement Stitch - place fourth appliqué
10. Tack Down Stitch - trim fabric
11. G27 - silver trees
12. 4321 - gray trees
13. 2040 - trees
14. 3761 - blue sidewalk
15. Placement Stitch - folded fabric 1
16. Folding Stitch - folded fabric 1
17. Tack Down Stitch - folded fabric 1
18. Placement Stitch - folded fabric 2
19. Folding Stitch - folded fabric 2
20. Tack Down Stitch - folded fabric 2
21. Placement Stitch - folded fabric 3
22. Folding Stitch - folded fabric 3
23. Tack Down Stitch - folded fabric 3
24. Placement Stitch - folded fabric 4
25. Folding Stitch - folded fabric 4
26. Tack Down Stitch - folded fabric 4
27. 3763 - shadows on blue sidewalk
28. 730 - snowman satin stitch and baby's body
29. 453 - faces, hat, and buttons
30. 652 - cheeks
31. 453 - noses
32. 652 - scarf, gloves and band on hat
33. 1608 - scarf, gloves and bands on hat
34. 2040 - baby's gloves, hat, and jacket
35. G27 - baby scarf
36. 453 - arms
37. 3761 - blue dots on gray trees

WFSN10

STEPS

1. Placement Stitch - place batting
2. Tack Down Stitch - trim batting
3. Placement Stitch - place first appliqué
4. Tack Down Stitch - trim fabric
5. Placement Stitch - place second appliqué
6. Tack Down Stitch - trim fabric
7. Placement Stitch - place third appliqué
8. Tack Down Stitch - trim fabric
9. 2040 - trees
10. 4321 - gray tree
11. 730 - white tree
12. 4321 - gazebo roof and floor
13. 453 - gazebo roof and poles
14. 451 - gazebo roof and poles
15. 3761 - blue sidewalk
16. 3763 - shadows on blue sidewalk
17. Placement Stitch - place fourth appliqué
18. Tack Down Stitch - trim fabric
19. 730 - snowman satin stitch and snow
20. Placement Stitch - folded fabric 1
21. Folding Stitch - folded fabric 1
22. Tack Down Stitch - folded fabric 1
23. Placement Stitch - folded fabric 2
24. Folding Stitch - folded fabric 2
25. Tack Down Stitch - folded fabric 2
26. Placement Stitch - folded fabric 3
27. Folding Stitch - folded fabric 3
28. Tack Down Stitch - folded fabric 3
29. Placement Stitch - folded fabric 4
30. Folding Stitch - folded fabric 4
31. Tack Down Stitch - folded fabric 4
32. 3761 - birds
33. 3763 - bird details
34. 451 - faces on snowman and birds
35. 652 - cheeks
36. 451 - nose
37. 453 - arms
38. 2040 - ski cap and scarf
39. 3761 - gloves and ball on ski cap
40. 1608 - heart on scarf
41. 451 - bird beaks
42. 2040 - green dots on white tree

SNOWMAN'S BEST FRIEND



WFSN11

- AA - Size - 9.2" x 9.2" (Stitches - 37845)
- A - Size - 7.8" x 7.8" (Stitches - 30804)
- B - Size - 6.8" x 6.8" (Stitches - 25839)
- C - Size - 5.9" x 5.9" (Stitches - 21509)
- D - Size - 4.8" x 4.8" (Stitches - 17054)

WFSN12

- AA - Size - 9.2" x 9.2" (Stitches - 41991)
- A - Size - 7.8" x 7.8" (Stitches - 33578)
- B - Size - 6.8" x 6.8" (Stitches - 27771)
- C - Size - 5.9" x 5.9" (Stitches - 22761)
- D - Size - 4.8" x 4.8" (Stitches - 17596)

SNOWMAN'S BEST FRIEND

WFSN11

STEPS

1. Placement Stitch - place batting
2. Tack Down Stitch - trim batting
3. Placement Stitch - place first appliqué
4. Tack Down Stitch - trim fabric
5. Placement Stitch - place second appliqué
6. Tack Down Stitch - trim fabric
7. Placement Stitch - place third appliqué
8. Tack Down Stitch - trim fabric
9. Placement Stitch - place fourth appliqué
10. Tack Down Stitch - trim fabric
11. 451 - taupe tree
12. 2040 - tree
13. 730 - white trees
14. 3761 - blue sidewalk
15. 3763 - shadow on blue sidewalk
16. 453 - arms
17. 730 - snowman satin stitch
18. 2040 - hat, scarf, and gloves
19. 1608 - band on hat
20. 453 - face and buttons
21. 1608 - leash
22. 453 - nose
23. 1608 - scarf highlights
24. 652 - purple dots on white trees
25. Placement Stitch - folded fabric 1
26. Folding Stitch - folded fabric 1
27. Tack Down Stitch - folded fabric 1
28. Placement Stitch - folded fabric 2
29. Folding Stitch - folded fabric 2
30. Tack Down Stitch - folded fabric 2
31. Placement Stitch - folded fabric 3
32. Folding Stitch - folded fabric 3
33. Tack Down Stitch - folded fabric 3
34. Placement Stitch - folded fabric 4
35. Folding Stitch - folded fabric 4
36. Tack Down Stitch - folded fabric 4

WFSN12

STEPS

1. Placement Stitch - place batting
2. Tack Down Stitch - trim batting
3. Placement Stitch - place first appliqué
4. Tack Down Stitch - trim fabric
5. Placement Stitch - place second appliqué
6. Tack Down Stitch - trim fabric
7. Placement Stitch - place third appliqué
8. Tack Down Stitch - trim fabric
9. 730 - snow and white tree
10. 2040 - trees
11. G27 - silver tree
12. 453 - bench
13. 451 - bench
14. 3761 - blue sidewalk
15. Placement Stitch - folded fabric 1
16. Folding Stitch - folded fabric 1
17. Tack Down Stitch - folded fabric 1
18. Placement Stitch - folded fabric 2
19. Folding Stitch - folded fabric 2
20. Tack Down Stitch - folded fabric 2
21. Placement Stitch - folded fabric 3
22. Folding Stitch - folded fabric 3
23. Tack Down Stitch - folded fabric 3
24. Placement Stitch - folded fabric 4
25. Folding Stitch - folded fabric 4
26. Tack Down Stitch - folded fabric 4
27. 3763 - dogs' shadows
28. 451 - right dog belly
29. 453 - right dog
30. 4321 - left dog
31. 652 - left dog tag
32. 2040 - right dog collar
33. 4321 - right dog eye, nose and mouth
34. 453 - left dog nose and eye
35. 652 - right dog tongue
36. 1608 - left dog leash and collar
37. 730 - left dog ear and falling snow
38. 3761 - blue dots on white tree

SLED TIME

WFSN13

- AA - Size - 9.2" x 9.2" (Stitches - 37453)
- A - Size - 7.8" x 7.8" (Stitches - 30471)
- B - Size - 6.8" x 6.8" (Stitches - 25656)
- C - Size - 5.9" x 5.9" (Stitches - 21517)
- D - Size - 4.8" x 4.8" (Stitches - 17143)



WFSN14

- AA - Size - 9.2" x 9.2" (Stitches - 50372)
- A - Size - 7.8" x 7.8" (Stitches - 40271)
- B - Size - 6.8" x 6.8" (Stitches - 33317)
- C - Size - 5.9" x 5.9" (Stitches - 27206)
- D - Size - 4.8" x 4.8" (Stitches - 21104)



WFSN13

STEPS

1. Placement Stitch - place batting
2. Tack Down Stitch - trim batting
3. Placement Stitch - place first appliqué
4. Tack Down Stitch - trim fabric
5. Placement Stitch - place second appliqué
6. Tack Down Stitch - trim fabric
7. Placement Stitch - place third appliqué
8. Tack Down Stitch - trim fabric
9. G27 - metallic trees
10. 730 - Satin Stitch - snow
11. 2040 - green trees
12. 3761 - blue sled path
13. 3763 - shadow of snowman
14. 730 - large white tree
15. Placement Stitch - folded fabric 1
16. Folding Stitch - folded fabric 1
17. Tack Down Stitch - folded fabric 1
18. Placement Stitch - folded fabric 2
19. Folding Stitch - folded fabric 2
20. Tack Down Stitch - folded fabric 2
21. Placement Stitch - folded fabric 3
22. Folding Stitch - folded fabric 3
23. Tack Down Stitch - folded fabric 3
24. Placement Stitch - folded fabric 4
25. Folding Stitch - folded fabric 4
26. Tack Down Stitch - folded fabric 4
27. 652 - light purple body of bird
28. 1608 - dark purple detailing
29. 3763 - dark blue body of bird
30. 3761 - light blue detailing
31. 3761 - light blue belly on bird
32. 451 - bird eyes and upper bird's feet and face
33. 453 - bird beaks and lower bird's feet
34. 3761 - dots on trees

WFSN14

STEPS

1. Placement Stitch - place batting
2. Tack Down Stitch - trim batting
3. Placement Stitch - place base fabric
4. Tack Down Stitch - trim fabric
5. 3761 - blue sled path
6. Placement Stitch - folded fabric 1
7. Folding Stitch - folded fabric 1
8. Tack Down Stitch - folded fabric 1
9. Placement Stitch - folded fabric 2
10. Folding Stitch - folded fabric 2
11. Tack Down Stitch - folded fabric 2
12. Placement Stitch - folded fabric 3
13. Folding Stitch - folded fabric 3
14. Tack Down Stitch - folded fabric 3
15. Placement Stitch - folded fabric 4
16. Folding Stitch - folded fabric 4
17. Tack Down Stitch - folded fabric 4
18. 2040 - blue trees
19. 453 - bottom of sled
20. Placement Stitch - place first appliqué
21. Tack Down Stitch - trim appliqué
22. 730 - snow
23. 2040 - sled handle
24. G27 - sled rails
25. 652 - upper snowman's scarf
26. 1608 - bottom snowman's scarf, hat, and mittens
27. 3763 - bottom snowman mitten and scarf details
28. 453 - stick arms
29. 4321 - upper snowman mitten and scarf details - gray
30. 3763 - upper snowman mitten and scarf details - blue
31. 1608 - tip of bottom snowman's hat
32. 652 - cheeks
33. 453 - buttons and smiles
34. 451 - snowmen noses

PICKING ACORNS

WFSN15

- AA - Size - 9.2" x 9.2" (Stitches - 33758)
- A - Size - 7.8" x 7.8" (Stitches - 27762)
- B - Size - 6.8" x 6.8" (Stitches - 23664)
- C - Size - 5.9" x 5.9" (Stitches - 19970)
- D - Size - 4.8" x 4.8" (Stitches - 16089)



WFSN16

- AA - Size - 9.2" x 9.2" (Stitches - 39911)
- A - Size - 7.8" x 7.8" (Stitches - 32017)
- B - Size - 6.8" x 6.8" (Stitches - 26718)
- C - Size - 5.9" x 5.9" (Stitches - 22118)
- D - Size - 4.8" x 4.8" (Stitches - 17594)



PICKING ACORNS

WFSN15

STEPS

1. Placement Stitch - place batting
2. Tack Down Stitch - trim batting
3. Placement Stitch - place first appliqué
4. Tack Down Stitch - trim fabric
5. Placement Stitch - place second appliqué
6. Tack Down Stitch - trim fabric
7. Placement Stitch - place third appliqué
8. Tack Down Stitch - trim fabric
9. Placement Stitch - place fourth appliqué
10. Tack Down Stitch - trim fabric
11. 2040 - green trees in back
12. 451 - gray tree
13. 730 - Satin Stitch - snow and white tree
14. 2040 - green tree in front
15. 2040 - Satin Stitch - lower half of large tree
16. Placement Stitch - folded fabric 1
17. Folding Stitch - folded fabric 1
18. Tack Down Stitch - folded fabric 1
19. Placement Stitch - folded fabric 2
20. Folding Stitch - folded fabric 2
21. Tack Down Stitch - folded fabric 2
22. Placement Stitch - folded fabric 3
23. Folding Stitch - folded fabric 3
24. Tack Down Stitch - folded fabric 3
25. Placement Stitch - folded fabric 4
26. Folding Stitch - folded fabric 4
27. Tack Down Stitch - folded fabric 4
28. Placement Stitch - fifth appliqué
29. Tack Down Stitch - trim fabric
30. 2040 - Satin Stitch - top half of large tree
31. 730 - snow on large tree
32. 4321 - squirrels' bellies
33. 451 - squirrels
34. 652 - squirrel cheeks
35. 453 - top of acorn
36. 451 - bottom of acorn
37. 453 - squirrels' eyes and noses
38. 1608 - dots on trees

WFSN16

STEPS

1. Placement Stitch - place batting
2. Tack Down Stitch - trim batting
3. Placement Stitch - place first appliqué
4. Tack Down Stitch - trim fabric
5. Placement Stitch - place second appliqué
6. Tack Down Stitch - trim fabric
7. 3763 - snowman shadow
8. 451 - tree trunk
9. 453 - tree trunk shadow
10. Placement Stitch - folded fabric 1
11. Folding Stitch - folded fabric 1
12. Tack Down Stitch - folded fabric 1
13. Placement Stitch - folded fabric 2
14. Folding Stitch - folded fabric 2
15. Tack Down Stitch - folded fabric 2
16. Placement Stitch - folded fabric 3
17. Folding Stitch - folded fabric 3
18. Tack Down Stitch - folded fabric 3
19. Placement Stitch - folded fabric 4
20. Folding Stitch - folded fabric 4
21. Tack Down Stitch - folded fabric 4
22. Placement Stitch - place third appliqué
23. Tack Down Stitch - trim fabric
24. Placement Stitch - place fourth appliqué
25. Tack Down Stitch - trim fabric
26. 2040 - Satin Stitch - tree
27. 730 - snow
28. 453 - stick arms
29. 4321 - acorn bag
30. 451 - inside and edges of acorn bag
31. 453 - "acorns"
32. 3763 - hat, scarf, and mitten tips
33. 3761 - lines on hat
34. 652 - purple scarf, mittens, and hat detailing
35. 453 - nose
36. 453 - tip of acorn
37. 451 - bottom of acorn

HITTING THE SLOPES

WFSN17

- AA - Size - 9.2" x 9.2" (Stitches - 38234)
- A - Size - 7.8" x 7.8" (Stitches - 31249)
- B - Size - 6.8" x 6.8" (Stitches - 26265)
- C - Size - 5.9" x 5.9" (Stitches - 21930)
- D - Size - 4.8" x 4.8" (Stitches - 17253)



WFSN18

- AA - Size - 9.2" x 9.2" (Stitches - 48087)
- A - Size - 7.8" x 7.8" (Stitches - 38946)
- B - Size - 6.8" x 6.8" (Stitches - 32839)
- C - Size - 5.9" x 5.9" (Stitches - 27217)
- D - Size - 4.8" x 4.8" (Stitches - 21533)



HITTING THE SLOPES - STEPS

WFSN17

STEPS

1. Placement Stitch - place batting
2. Tack Down Stitch - trim batting
3. Placement Stitch - place first appliqué
4. Tack Down Stitch - trim fabric
5. Placement Stitch - place second appliqué
6. Tack Down Stitch - trim fabric
7. Placement Stitch - place third appliqué
8. Tack Down Stitch - trim fabric
9. Placement Stitch - place fourth appliqué
10. Tack Down Stitch - trim fabric
11. 2040 - green trees
12. 3761 - blue sled path
13. 3763 - snowman's shadow
14. Placement Stitch - folded fabric 1
15. Folding Stitch - folded fabric 1
16. Tack Down Stitch - folded fabric 1
17. Placement Stitch - folded fabric 2
18. Folding Stitch - folded fabric 2
19. Tack Down Stitch - folded fabric 2
20. Placement Stitch - folded fabric 3
21. Folding Stitch - folded fabric 3
22. Tack Down Stitch - folded fabric 3
23. Placement Stitch - folded fabric 4
24. Folding Stitch - folded fabric 4
25. Tack Down Stitch - folded fabric 4
26. Placement Stitch - place fourth appliqué
27. Tack Down Stitch - trim fabric
28. 3763 - skis
29. 730 - Satin Stitch - snowman
30. 451 - stick arms
31. 652 - light purple scarf details, mittens, and ski details
32. 4321 - gray scarf detailing
33. 652 - cheeks
34. 451 - nose
35. 453 - hat, eyes, smile, and buttons
36. 4321 - hat stripe
37. 3763 - ski poles
38. 453 - ski pole handles
39. 2040 - tree dots

WFSN18

STEPS

1. Placement Stitch - place batting
2. Tack Down Stitch - trim batting
3. Placement Stitch - place first appliqué
4. Tack Down Stitch - trim fabric
5. 3761 - blue sidewalk
6. Placement Stitch - folded fabric 1
7. Folding Stitch - folded fabric 1
8. Tack Down Stitch - folded fabric 1
9. Placement Stitch - folded fabric 2
10. Folding Stitch - folded fabric 2
11. Tack Down Stitch - folded fabric 2
12. Placement Stitch - folded fabric 3
13. Folding Stitch - folded fabric 3
14. Tack Down Stitch - folded fabric 3
15. Placement Stitch - folded fabric 4
16. Folding Stitch - folded fabric 4
17. Tack Down Stitch - folded fabric 4
18. Placement Stitch - place second appliqué
19. Tack Down Stitch - trim fabric
20. Placement Stitch - place third appliqué
21. Tack Down Stitch - trim fabric
22. 2040 - tree trunks
23. 2040 - Satin Stitch - trees
24. 453 - skis
25. 2040 - stripes on skis
26. 730 - Satin Stitch - snowman and snow
27. 453 - stick arms
28. 4321 - ski poles
29. 3763 - mittens
30. 3763 - scarf and ear muffs
31. 1608 - scarf and mitten detailing
32. 1608 - top of ear muffs and pole handles
33. 451 - nose
34. 451 - eyes, smile, and buttons
35. 652 - squirrel belly
36. 451 - squirrel body
37. 652 - cheeks on snowman
38. 652 - bird belly
39. 3761 - body of bird
40. 3763 - bird eye and wing detailing
41. 453 - bird beak and feet

SNOW ANGELS

WFSN19

- AA - Size - 9.2" x 9.2" (Stitches - 43089)
- A - Size - 7.8" x 7.8" (Stitches - 35177)
- B - Size - 6.8" x 6.8" (Stitches - 29491)
- C - Size - 5.9" x 5.9" (Stitches - 24458)
- D - Size - 4.8" x 4.8" (Stitches - 19214)



WFSN20

- AA - Size - 9.2" x 9.2" (Stitches - 43769)
- A - Size - 7.8" x 7.8" (Stitches - 35081)
- B - Size - 6.8" x 6.8" (Stitches - 29350)
- C - Size - 5.9" x 5.9" (Stitches - 23949)
- D - Size - 4.8" x 4.8" (Stitches - 18611)



WFSN19

STEPS

1. Placement Stitch - place batting
2. Tack Down Stitch - trim batting
3. Placement Stitch - place first appliqué
4. Tack Down Stitch - trim fabric
5. Placement Stitch - place second appliqué
6. Tack Down Stitch - trim fabric
7. Placement Stitch - place third appliqué
8. Tack Down Stitch - trim fabric
9. 2040 - green trees
10. 4321 - gray trees
11. 730 - white trees and snow
12. 3761 - blue sled path
13. Placement Stitch - folded fabric 1
14. Folding Stitch - folded fabric 1
15. Tack Down Stitch - folded fabric 1
16. Placement Stitch - folded fabric 2
17. Folding Stitch - folded fabric 2
18. Tack Down Stitch - folded fabric 2
19. Placement Stitch - folded fabric 3
20. Folding Stitch - folded fabric 3
21. Tack Down Stitch - folded fabric 3
22. Placement Stitch - folded fabric 4
23. Folding Stitch - folded fabric 4
24. Tack Down Stitch - folded fabric 4
25. Placement Stitch - place fourth appliqué
26. Tack Down Stitch - trim fabric
27. 3763 - tree shadows
28. 2040 - tree trunks
29. 2040 - Satin Stitch - trees
30. 730 - snow
31. 652 - bird belly
32. 1608 - bird body
33. 453 - bird feet
34. 3761 - tree dots

WFSN20

STEPS

1. Placement Stitch - place batting
2. Tack Down Stitch - trim batting
3. Placement Stitch - place first appliqué
4. Tack Down Stitch - trim fabric
5. Placement Stitch - folded fabric 1
6. Folding Stitch - folded fabric 1
7. Tack Down Stitch - folded fabric 1
8. Placement Stitch - folded fabric 2
9. Folding Stitch - folded fabric 2
10. Tack Down Stitch - folded fabric 2
11. Placement Stitch - folded fabric 3
12. Folding Stitch - folded fabric 3
13. Tack Down Stitch - folded fabric 3
14. Placement Stitch - folded fabric 4
15. Folding Stitch - folded fabric 4
16. Tack Down Stitch - folded fabric 4
17. Placement Stitch - place second appliqué
18. Tack Down Stitch - trim fabric
19. Placement Stitch - place third appliqué
20. Tack Down Stitch - trim fabric
21. 3761 - light blue snowman shadow
22. 3763 - dark blue snowman shadow
23. 2040 - tree stump
24. 730 - Satin Stitch - snowman and snow
25. Placement Stitch - place fourth appliqué
26. Tack Down Stitch - trim fabric
27. 2040 - Satin Stitch - tree
28. 652 - light purple scarf
29. 1608 - lower snowman's mittens
30. 453 - stick arms
31. 3761 - light blue scarf
32. 1608 - upper snowman's mittens
33. 730 - snow on tree
34. 652 - cheeks
35. 453 - smiles
36. 453 - noses